



## High Pressure Ball Valves (Full Bore)



**SEALUM** high-pressure ball valves utilize SAE J518 four-bolt flange technology to eliminate leaks so common with traditional pipe thread ball valves. With companion faces, virtually any O'Ring face flange adapter or hose head can be mounted directly to the valve itself, or by using O'Ring heads it can be mounted directly onto manifolds, cylinders or any four-bolt companion flange. With three different configurations to choose from, **SEALUM** ball valves will complement any hydraulic system.

### MATERIALS

**Ball:** 4140 Heat Treated Steel

**Stem:** 4140 Heat Treated Steel

**Body:** C1018 Steel

**Handle:** G40.21-44W Plate

**Ball Seats:** Delrin

**O'Ring Head:** C1040 Steel

**Companion Cover:** C1018 Steel



### PRODUCT FEATURES

**Bore:** All valves are full bore ball valves.

**Cover:** Four-bolt companion covers can be rotated to any 90° position.

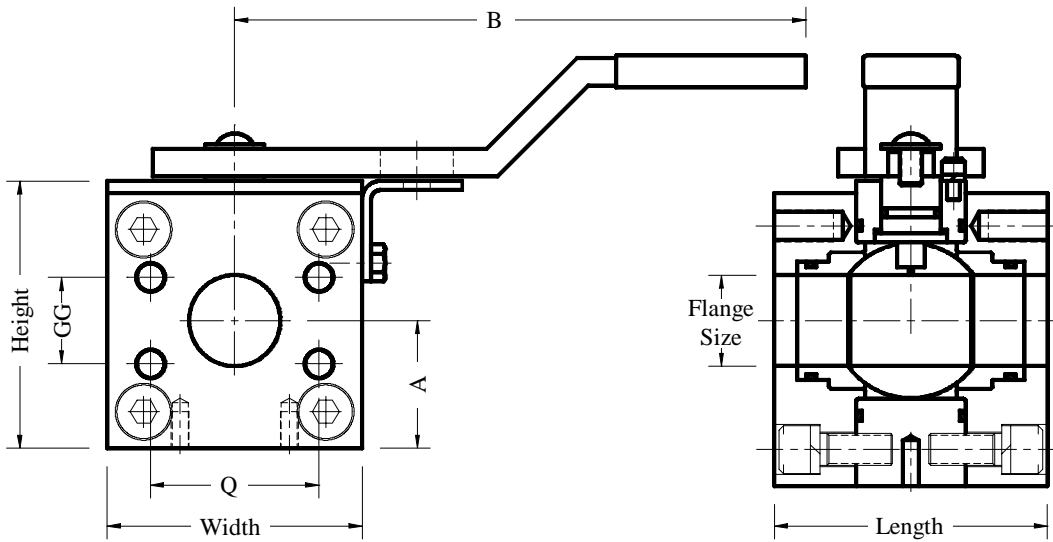
**Mounting:** Two threaded mounting holes in base of valve .

**Pressure:** Pressure ratings are based upon SAE Code 61 and Code 62.

**Options:** Mounting brackets are available to mount a limit or proximity switch to

**Handle:** Can be assembled in any of four 90° positions, and can be pad locked in the open or closed position (pad lock not included).

## Companion Face / Companion Face

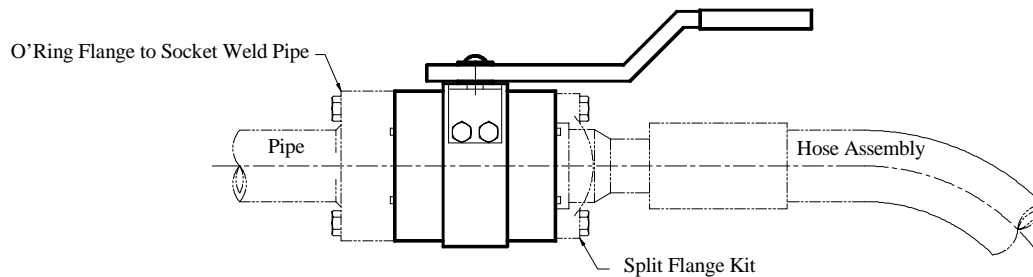


### Code 61 Ball Valves

Part No.	Flange Size	Pressure	GG	Q	Width	Height	Length	A	B
3359-16	1.00	5000 psi	1.031	2.062	3.00	3.25	3.75	1.50	9.75
3359-20	1.25	4000 psi	1.188	2.312	3.50	3.65	3.75	1.75	9.75
3359-24	1.50	3000 psi	1.406	2.750	4.00	4.13	3.81	2.06	9.75
3359-32	2.00	3000 psi	1.688	3.062	4.50	4.84	4.75	2.25	11.00
3359-40	2.50	2500 psi	2.000	3.500	4.50	5.50	4.88	2.56	11.00
3359-48	3.00	2000 psi	2.438	4.188	6.00	6.31	5.75	3.00	11.00
3359-64	4.00	500 psi	3.062	5.125	7.75	8.25	6.88	3.88	18.00

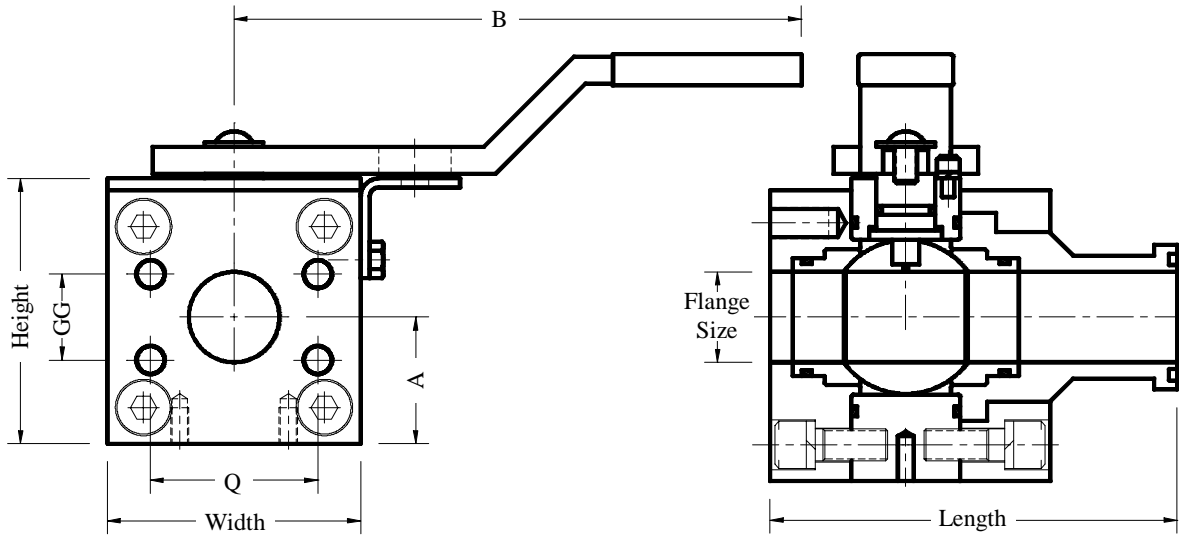
### Code 62 Ball Valves

3362-16	1.00	6000 psi	1.093	2.250	3.50	3.75	3.75	1.88	9.75
3362-20	1.25	6000 psi	1.250	2.625	4.00	4.25	4.25	2.13	9.75
3362-24	1.50	6000 psi	1.437	3.125	5.00	4.94	4.75	2.44	11.00
3362-32	2.00	6000 psi	1.750	3.812	5.50	5.75	6.25	2.88	11.00

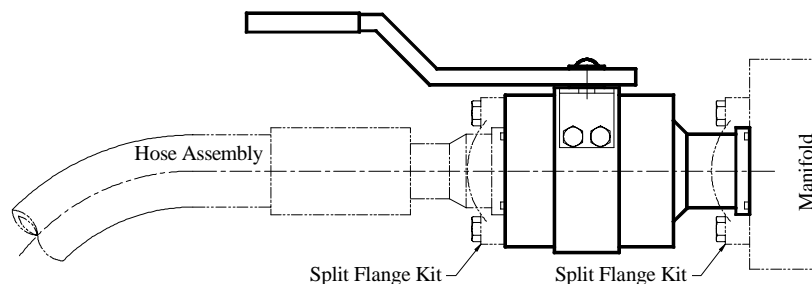


*Example of a ball valve at the end of a pipe run*

## Companion Face to O'Ring Head

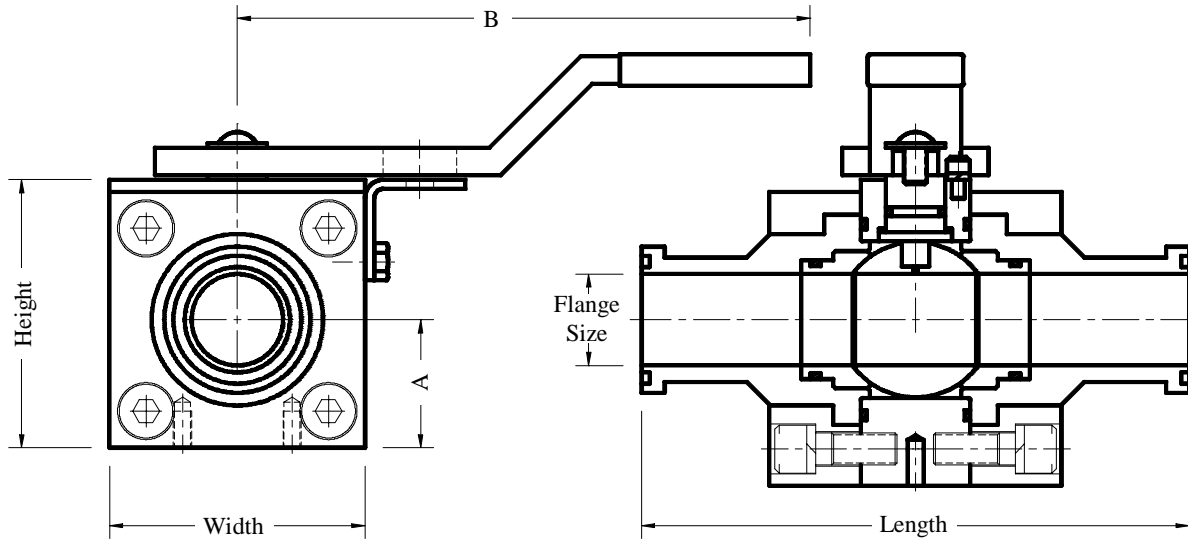


Code 61 Ball Valves									
Part No.	Flange Size	Pressure	GG	Q	Width	Height	Length	A	B
3360-16	1.00	5000 psi	1.031	2.062	3.50	3.25	5.38	1.50	9.75
3360-20	1.25	4000 psi	1.188	2.312	3.50	3.65	5.63	1.75	9.75
3360-24	1.50	3000 psi	1.406	2.750	4.00	4.13	6.06	2.06	9.75
3360-32	2.00	3000 psi	1.688	3.062	4.50	4.84	7.25	2.25	11.00
3360-40	2.50	2500 psi	2.000	3.500	4.50	5.50	8.19	2.56	11.00
3360-48	3.00	2000 psi	2.438	4.188	6.00	6.31	9.06	3.00	11.00
3360-64	4.00	500 psi	3.062	5.125	7.75	8.25	11.13	3.88	18.00
Code 62 Ball Valves									
3363-16	1.00	6000 psi	1.093	2.250	3.50	3.75	5.88	1.88	9.75
3363-20	1.25	6000 psi	1.250	2.625	4.00	4.25	6.63	2.13	9.75
3363-24	1.50	6000 psi	1.437	3.125	5.00	4.94	7.88	2.44	11.00
3363-32	2.00	6000 psi	1.750	3.812	5.50	5.75	9.75	2.88	11.00

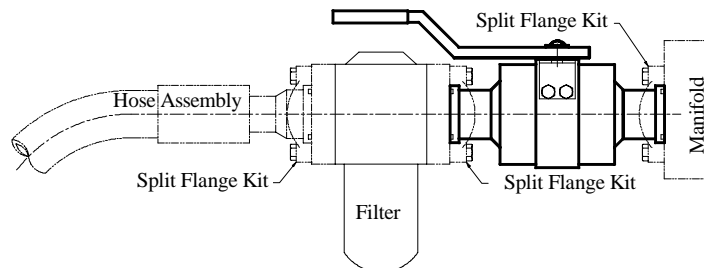


Example of connecting a ball valve to a manifold

## O'Ring Head to O'Ring Head



Code 61 Ball Valves							
Part No.	Flange Size	Pressure	Width	Height	Length	A	B
3361-16	1.00	5000 psi	3.50	3.25	7.00	1.50	9.75
3361-20	1.25	4000 psi	3.50	3.65	7.50	1.75	9.75
3361-24	1.50	3000 psi	4.00	4.13	8.31	2.06	9.75
3361-32	2.00	3000 psi	4.50	4.84	9.75	2.25	11.00
3361-40	2.50	2500 psi	4.50	5.50	11.50	2.56	11.00
3361-48	3.00	2000 psi	6.00	6.31	12.38	3.00	11.00
3361-64	4.00	500 psi	7.75	8.25	15.50	3.88	18.00
Code 62 Ball Valves							
3364-16	1.00	6000 psi	3.50	3.75	8.00	1.88	9.75
3364-20	1.25	6000 psi	4.00	4.25	9.00	2.13	9.75
3364-24	1.50	6000 psi	5.00	4.94	11.00	2.44	11.00
3364-32	2.00	6000 psi	5.50	5.75	13.25	2.88	11.00



*Example of connecting a filter to a manifold*