



## Welded, Threaded & 4-Bolt Tees

O'Ring Boss

National Pipe Thread

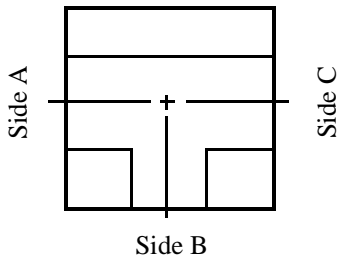
Socket Weld Pipe

Socket Weld Tube

4-Bolt Flange



## Welded, Threaded & 4-Bolt Tees



All tees have three sides. Side A, B, & C  
Side A & C are considered to be the 'RUN'  
While Side B is considered to be the 'BRANCH'  
Although most sizes shown are straight sizes,

Jump sizes are available upon request.

Contact our sales staff for sizes not shown in this catalog.

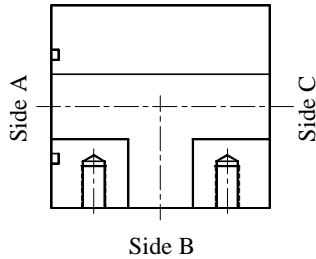
See page 46-24 for corner tees

Code 61 & 62 O'Ring Face Tees			
Side A	Side B	Side C	Page No.
ORF	Comp	Comp	46-3
		ORB	46-3
		NPT	46-3
		SWP	46-3
		SWT	46-4
	ORB	Comp	46-4
		ORB	46-4
		SWP	46-4
		SWT	46-5
		Comp	46-5
	NPT	NPT	46-5
		SWP	46-5
		SWT	46-6
		Comp	46-6
		ORB	46-6
	SWP	NPT	46-6
		SWP	46-7
		Comp	46-7
		ORB	46-7
		SWT	46-7
SWT	NPT	46-7	
	SWT	46-8	
	Comp	46-8	
	ORB	46-8	
	NPT	46-8	
Comp	ORF	SWP	46-8
		SWP	46-9
		SWT	46-9
		ORB	46-9
SWP	ORF	NPT	46-9
		SWP	46-10
		ORB	46-10
SWT	ORF	NPT	46-10
		SWT	46-10
		ORB	46-10
ORB	ORF	ORB	46-11
NPT	ORF	NPT	46-11

Code 61 & 62 Companion Tees			
Side A	Side B	Face C	Page No.
Comp	Comp	Comp	46-11
		ORB	46-11
		NPT	46-12
		SWP	46-12
		SWT	46-12
	ORB	Comp	46-12
		ORB	46-13
		SWP	46-13
		SWT	46-13
		Comp	46-13
	NPT	NPT	46-14
		SWP	46-14
		SWT	46-14
		Comp	46-14
		ORB	46-15
	SWP	NPT	46-15
		SWP	46-15
		Comp	46-15
		ORB	46-16
		SWT	46-16
SWT	NPT	46-16	
	SWT	46-16	
	Comp	46-16	
	ORB	46-16	
	SWP	46-17	
SWP	Comp	NPT	46-17
		SWP	46-17
SWT	Comp	ORB	46-17
		NPT	46-17
ORB	Comp	ORB	46-18
		SWT	46-18
ORB	Comp	ORB	46-18
NPT	Comp	NPT	46-18

Welded & Threaded Tees				
Side A	Side B	Side C	Page No.	
ORB	ORB	ORB	46-18	
	SWP	ORB	46-19	
	SWT	ORB	46-19	
NPT	NPT	NPT	46-19	
	SWP	NPT	46-19	
	SWT	NPT	46-20	
	ORB	ORB	46-20	
SWP	ORB	SWP	46-20	
		NPT	46-21	
	SWP	SWP	46-21	
		ORB	46-21	
		NPT	46-21	
SWT	ORB	SWP	46-22	
		SWT	46-22	
	NPT	NPT	46-22	
		SWT	46-23	
		ORB	46-23	
	SWT	NPT	NPT	46-23
			SWT	46-23

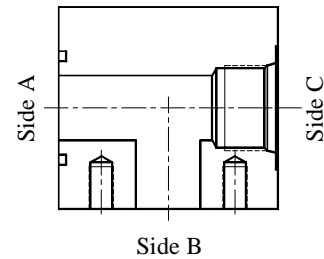
## Code 61 & Code 62 4-Bolt Tees



**ORF / Companion / Companion**

Code 61 Part No.	Code 62 Part No.	Side A (ORF)	Side B (Comp)	Side C (Comp)
2415-08-08-08	2520-08-08-08	0.50	0.50	0.50
2415-12-12-12	2520-12-12-12	0.75	0.75	0.75
2415-16-16-16	2520-16-16-16	1.00	1.00	1.00
2415-20-20-20	2520-20-20-20	1.25	1.25	1.25
2415-24-24-24	2520-24-24-24	1.50	1.50	1.50
2415-32-32-32	2520-32-32-32	2.00	2.00	2.00

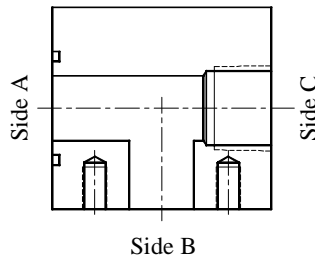
SANDWICH STYLE BLOCK, NO BOLTS SUPPLIED



**ORF / Companion / ORB**

Code 61 Part No.	Code 62 Part No.	Side A (ORF)	Side B (Comp)	Side C (ORB)
2418-08-08-08	2523-08-08-08	0.50	0.50	#8 (3/4"-16)
2418-12-12-12	2523-12-12-12	0.75	0.75	#12 (1-1/16"-12)
2418-16-16-16	2523-16-16-16	1.00	1.00	#16 (1-5/16"-12)
2418-20-20-20	2523-20-20-20	1.25	1.25	#20 (1-5/8"-12)
2418-24-24-24	2523-24-24-24	1.50	1.50	#24 (1-7/8"-12)
2418-32-32-32	2523-32-32-32	2.00	2.00	#32 (2-1/2"-12)

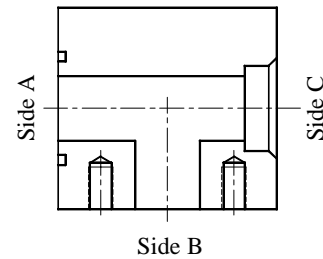
COMES COMPLETE WITH BOLT KIT



**ORF / Companion / NPT**

Code 61 Part No.	Code 62 Part No.	Side A (ORF)	Side B (Comp)	Side C (NPT)
2419-08-08-08	2524-08-08-08	0.50	0.50	1/2"-14
2419-12-12-12	2524-12-12-12	0.75	0.75	3/4"-14
2419-16-16-16	2524-16-16-16	1.00	1.00	1"-11.5
2419-20-20-20	2524-20-20-20	1.25	1.25	1-1/4"-11.5
2419-24-24-24	2524-24-24-24	1.50	1.50	1-1/2"-11.5
2419-32-32-32	2524-32-32-32	2.00	2.00	2"-11.5

COMES COMPLETE WITH BOLT KIT

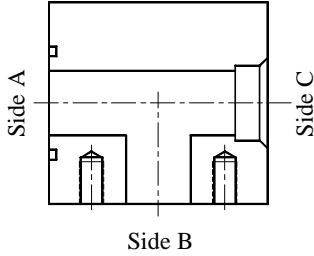


**ORF / Companion / SWP**

Code 61 Part No.	Code 62 Part No.	Side A (ORF)	Side B (Comp)	Side C (SWP)
2416-08-08-08	2521-08-08-08	0.50	0.50	1/2
2416-12-12-12	2521-12-12-12	0.75	0.75	3/4
2416-16-16-16	2521-16-16-16	1.00	1.00	1
2416-20-20-20	2521-20-20-20	1.25	1.25	1-1/4
2416-24-24-24	2521-24-24-24	1.50	1.50	1-1/2
2416-32-32-32	2521-32-32-32	2.00	2.00	2

COMES COMPLETE WITH BOLT KIT

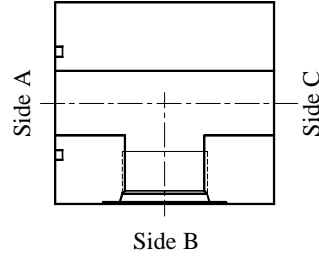
## Code 61 & Code 62 4-Bolt Tees



**ORF / Companion / SWT**

Code 61 Part No.	Code 62 Part No.	Side A (ORF)	Side B (Comp)	Side C (SWT)
2417-08-08-08	2522-08-08-08	0.50	0.50	0.50
2417-12-12-12	2522-12-12-12	0.75	0.75	0.75
2417-16-16-16	2522-16-16-16	1.00	1.00	1.00
2417-20-20-20	2522-20-20-20	1.25	1.25	1.25
2417-24-24-24	2522-24-24-24	1.50	1.50	1.50
2417-32-32-32	2522-32-32-32	2.00	2.00	2.00

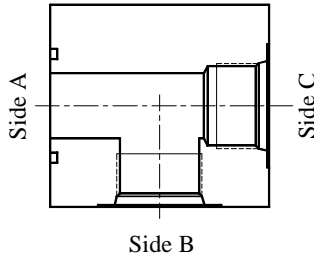
COMES COMPLETE WITH BOLT KIT



**ORF / ORB / Companion**

Code 61 Part No.	Code 62 Part No.	Side A (ORF)	Side B (ORB)	Side C (Comp)
1870-08-08-08	1872-08-08-08	0.50	#8 (3/4"-16)	0.50
1870-12-12-12	1872-12-12-12	0.75	#12 (1-1/16"-12)	0.75
1870-16-16-16	1872-16-16-16	1.00	#16 (1-5/16"-12)	1.00
1870-20-20-20	1872-20-20-20	1.25	#20 (1-5/8"-12)	1.25
1870-24-24-24	1872-24-24-24	1.50	#24 (1-7/8"-12)	1.50
1870-32-32-32	1872-32-32-32	2.00	#32 (2-1/2"-12)	2.00

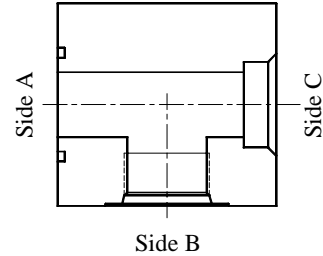
SANDWICH STYLE BLOCK, NO BOLTS SUPPLIED



**ORF / ORB / ORB**

Code 61 Part No.	Code 62 Part No.	Side A (ORF)	Side B (ORB)	Side C (ORB)
2431-08-08-08	2536-08-08-08	0.50	#8 (3/4"-16)	#8 (3/4"-16)
2431-12-12-12	2536-12-12-12	0.75	#12 (1-1/16"-12)	#12 (1-1/16"-12)
2431-16-16-16	2536-16-16-16	1.00	#16 (1-5/16"-12)	#16 (1-5/16"-12)
2431-20-20-20	2536-20-20-20	1.25	#20 (1-5/8"-12)	#20 (1-5/8"-12)
2431-24-24-24	2536-24-24-24	1.50	#24 (1-7/8"-12)	#24 (1-7/8"-12)
2431-32-32-32	2536-32-32-32	2.00	#32 (2-1/2"-12)	#32 (2-1/2"-12)

COMES COMPLETE WITH BOLT KIT

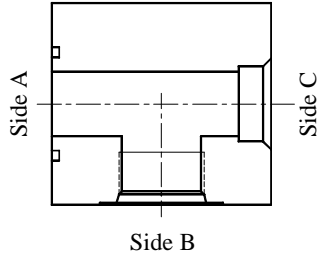


**ORF / ORB / SWP**

Code 61 Part No.	Code 62 Part No.	Side A (ORF)	Side B (ORB)	Side C (SWP)
2429-08-08-08	2534-08-08-08	0.50	#8 (3/4"-16)	1/2
2429-12-12-12	2534-12-12-12	0.75	#12 (1-1/16"-12)	3/4
2429-16-16-16	2534-16-16-16	1.00	#16 (1-5/16"-12)	1
2429-20-20-20	2534-20-20-20	1.25	#20 (1-5/8"-12)	1-1/4
2429-24-24-24	2534-24-24-24	1.50	#24 (1-7/8"-12)	1-1/2
2429-32-32-32	2534-32-32-32	2.00	#32 (2-1/2"-12)	2

COMES COMPLETE WITH BOLT KIT

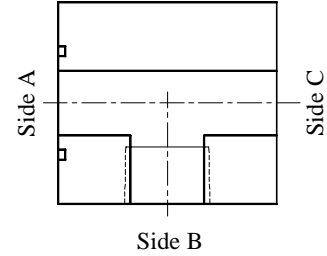
## Code 61 & Code 62 4-Bolt Tees



**ORF / ORB / SWT**

Code 61 Part No.	Code 62 Part No.	Side A (ORF)	Side B (ORB)	Side C (SWT)
2430-08-08-08	2535-08-08-08	0.50	#8 (3/4"-16)	0.50
2430-12-12-16	2535-12-12-16	0.75	#12 (1-1/16"-12)	1.00
2430-16-16-20	2535-16-16-20	1.00	#16 (1-5/16"-12)	1.25
2430-20-20-24	2535-20-20-24	1.25	#20 (1-5/8"-12)	1.50
2430-24-24-32	2535-24-24-32	1.50	#24 (1-7/8"-12)	2.00
2430-32-32-32	2535-32-32-32	2.00	#32 (2-1/2"-12)	2.00

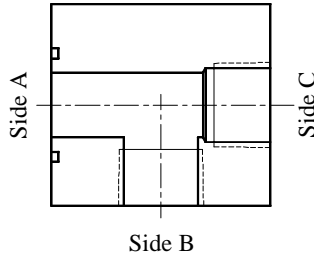
COMES COMPLETE WITH BOLT KIT



**ORF / NPT / Companion**

Code 61 Part No.	Code 62 Part No.	Side A (ORF)	Side B (NPT)	Side C (Comp)
2433-08-08-08	2538-08-08-08	0.50	1/2"-14	0.50
2433-12-12-12	2538-12-12-12	0.75	3/4"-14	0.75
2433-16-16-16	2538-16-16-16	1.00	1"-11.5	1.00
2433-20-20-20	2538-20-20-20	1.25	1-1/4"-11.5	1.25
2433-24-24-24	2538-24-24-24	1.50	1-1/2"-11.5	1.50
2433-32-32-32	2538-32-32-32	2.00	2"-11.5	2.00

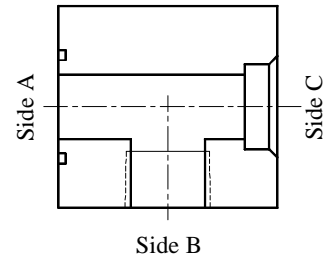
SANDWICH STYLE BLOCK, NO BOLTS SUPPLIED



**ORF / NPT / NPT**

Code 61 Part No.	Code 62 Part No.	Side A (ORF)	Side B (NPT)	Side C (NPT)
2437-08-08-08	2542-08-08-08	0.50	1/2"-14	1/2"-14
2437-12-12-12	2542-12-12-12	0.75	3/4"-14	3/4"-14
2437-16-16-16	2542-16-16-16	1.00	1"-11.5	1"-11.5
2437-20-20-20	2542-20-20-20	1.25	1-1/4"-11.5	1-1/4"-11.5
2437-24-24-24	2542-24-24-24	1.50	1-1/2"-11.5	1-1/2"-11.5
2437-32-32-32	2542-32-32-32	2.00	2"-11.5	2"-11.5

COMES COMPLETE WITH BOLT KIT

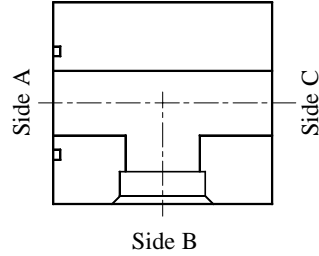
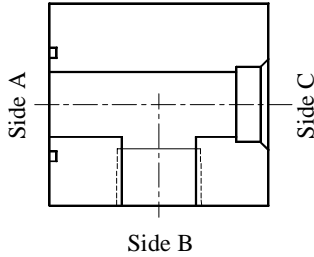


**ORF / NPT / SWP**

Code 61 Part No.	Code 62 Part No.	Side A (ORF)	Side B (NPT)	Side C (SWP)
2434-08-08-08	2539-08-08-08	0.50	1/2"-14	1/2
2434-12-12-12	2539-12-12-12	0.75	3/4"-14	3/4
2434-16-16-16	2539-16-16-16	1.00	1"-11.5	1
2434-20-20-20	2539-20-20-20	1.25	1-1/4"-11.5	1-1/4
2434-24-24-24	2539-24-24-24	1.50	1-1/2"-11.5	1-1/2
2434-32-32-32	2539-32-32-32	2.00	2"-11.5	2

COMES COMPLETE WITH BOLT KIT

## Code 61 & Code 62 4-Bolt Tees



### ORF / NPT / SWT

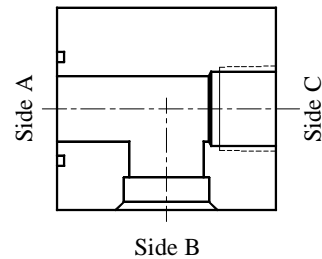
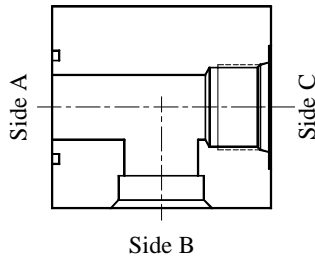
Code 61 Part No.	Code 62 Part No.	Side A (ORF)	Side B (NPT)	Side C (SWT)
2435-08-08-08	2540-08-08-08	0.50	1/2"-14	0.50
2435-12-12-12	2540-12-12-12	0.75	3/4"-14	0.75
2435-12-12-16	2540-12-12-16	0.75	3/4"-14	1.00
2435-16-16-20	2540-16-16-20	1.00	1"-11.5	1.25
2435-20-20-24	2540-20-20-24	1.25	1-1/4"-11.5	1.50
2435-24-24-32	2540-24-24-32	1.50	1-1/2"-11.5	2.00
2435-32-32-32	2540-32-32-32	2.00	2"-11.5	2.00

COMES COMPLETE WITH BOLT KIT

### ORF / SWP / Companion

Code 61 Part No.	Code 62 Part No.	Side A (ORF)	Side B (SWP)	Side C (Comp)
1869-08-08-08	1871-08-08-08	0.50	1/2	0.50
1869-12-12-12	1871-12-12-12	0.75	3/4	0.75
1869-16-16-16	1871-16-16-16	1.00	1	1.00
1869-20-20-20	1871-20-20-20	1.25	1-1/4	1.25
1869-24-24-24	1871-24-24-24	1.50	1-1/2	1.50
1869-32-32-32	1871-32-32-32	2.00	2	2.00

SANDWICH STYLE BLOCK, NO BOLTS SUPPLIED



### ORF / SWP / ORB

Code 61 Part No.	Code 62 Part No.	Side A (ORF)	Side B (SWP)	Side C (ORB)
2422-08-08-08	2527-08-08-08	0.50	1/2	#8 (3/4"-16)
2422-12-12-12	2527-12-12-12	0.75	3/4	#12 (1-1/16"-12)
2422-16-16-16	2527-16-16-16	1.00	1	#16 (1-5/16"-12)
2422-20-20-20	2527-20-20-20	1.25	1-1/4	#20 (1-5/8"-12)
2422-24-24-24	2527-24-24-24	1.50	1-1/2	#24 (1-7/8"-12)
2422-32-32-32	2527-32-32-32	2.00	2	#32 (2-1/2"-12)

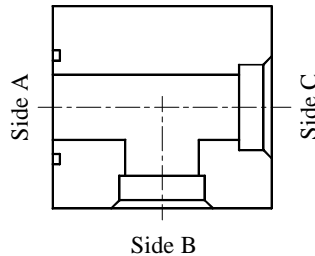
COMES COMPLETE WITH BOLT KIT

### ORF / SWP / NPT

Code 61 Part No.	Code 62 Part No.	Side A (ORF)	Side B (SWP)	Side C (NPT)
2423-08-08-08	2528-08-08-08	0.50	1/2	1/2"-14
2423-12-12-12	2528-12-12-12	0.75	3/4	3/4"-14
2423-16-16-16	2528-16-16-16	1.00	1	1"-11.5
2423-20-20-20	2528-20-20-20	1.25	1-1/4	1-1/4"-11.5
2423-24-24-24	2528-24-24-24	1.50	1-1/2	1-1/2"-11.5
2423-32-32-32	2528-32-32-32	2.00	2	2"-11.5

COMES COMPLETE WITH BOLT KIT

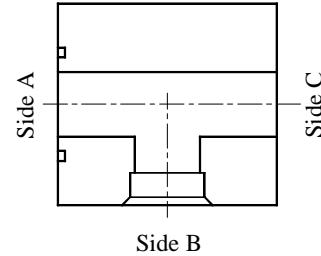
## Code 61 & Code 62 4-Bolt Tees



**ORF / SWP / SWP**

Code 61 Part No.	Code 62 Part No.	Side A (ORF)	Side B (SWP)	Side C (SWP)
2420-08-08-08	2525-08-08-08	0.50	1/2	1/2
2420-12-12-12	2525-12-12-12	0.75	3/4	3/4
2420-16-16-16	2525-16-16-16	1.00	1	1
2420-20-20-20	2525-20-20-20	1.25	1-1/4	1-1/4
2420-24-24-24	2525-24-24-24	1.50	1-1/2	1-1/2
2420-32-32-32	2525-32-32-32	2.00	2	2

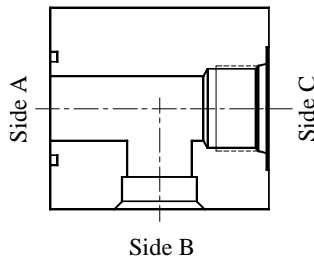
COMES COMPLETE WITH BOLT KIT



**ORF / SWT / Companion**

Code 61 Part No.	Code 62 Part No.	Side A (ORF)	Side B (SWT)	Side C (Comp)
2424-08-08-08	2529-08-08-08	0.50	0.50	0.50
2424-12-12-12	2529-12-12-12	0.75	0.75	0.75
2424-12-16-12	2529-12-16-12	0.75	1.00	1.00
2424-16-20-16	2529-16-20-16	1.00	1.25	1.25
2424-20-24-20	2529-20-24-20	1.25	1.50	1.50
2424-24-32-24	2529-24-32-24	1.50	2.00	2.00
2424-32-32-32	2529-32-32-32	2.00	2.00	2.00

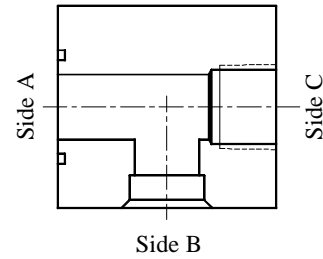
SANDWICH STYLE BLOCK, NO BOLTS SUPPLIED



**ORF / SWT / ORB**

Code 61 Part No.	Code 62 Part No.	Side A (ORF)	Side B (SWT)	Side C (ORB)
2427-08-08-08	2532-08-08-08	0.50	0.50	#8 (3/4"-16)
2427-12-12-12	2532-12-12-12	0.75	0.75	#12 (1-1/16"-12)
2427-16-20-16	2532-16-20-16	1.00	1.25	#16 (1-5/16"-12)
2427-20-24-20	2532-20-24-20	1.25	1.50	#20 (1-5/8"-12)
2427-24-32-24	2532-24-32-24	1.50	2.00	#24 (1-7/8"-12)
2427-32-32-32	2532-32-32-32	2.00	2.00	#32 (2-1/2"-12)

COMES COMPLETE WITH BOLT KIT

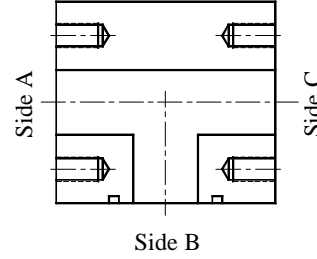
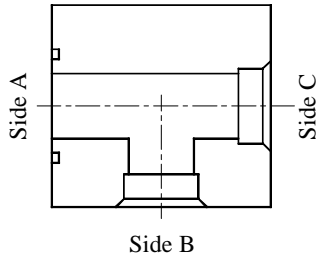


**ORF / SWT / NPT**

Code 61 Part No.	Code 62 Part No.	Side A (ORF)	Side B (SWT)	Side C (NPT)
2428-08-08-08	2533-08-08-08	0.50	0.50	1/2"-14
2428-12-12-12	2533-12-12-12	0.75	0.75	3/4"-14
2428-12-16-16	2533-12-16-16	0.75	1.00	1"-11.5
2428-16-20-16	2533-16-20-16	1.00	1.25	1"-11.5
2428-20-24-20	2533-20-24-20	1.25	1.50	1-1/4"-11.5
2428-24-32-24	2533-24-32-24	1.50	2.00	1-1/2"-11.5
2428-32-32-32	2533-32-32-32	2.00	2.00	2"-11.5

COMES COMPLETE WITH BOLT KIT

## Code 61 & Code 62 4-Bolt Tees



### ORF / SWT / SWT

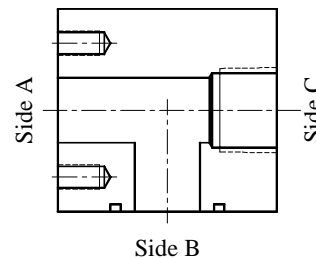
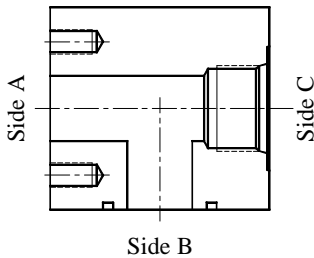
Code 61 Part No.	Code 62 Part No.	Side A (ORF)	Side B (SWT)	Side C (SWT)
2426-08-08-08	2531-08-08-08	0.50	0.50	0.50
2426-12-12-12	2531-12-12-12	0.75	0.75	0.75
2426-12-16-16	2531-12-16-16	0.75	1.00	1.00
2426-16-20-20	2531-16-20-20	1.00	1.25	1.25
2426-20-24-24	2531-20-24-24	1.25	1.50	1.50
2426-24-32-32	2531-24-32-32	1.50	2.00	2.00
2426-32-32-32	2531-32-32-32	2.00	2.00	2.00

COMES COMPLETE WITH BOLT KIT

### Companion / ORF / Companion

Code 61 Part No.	Code 62 Part No.	Side A (Comp)	Side B (ORF)	Side C (Comp)
2012-08-08-08	2015-08-08-08	0.50	0.50	0.50
2012-12-12-12	2015-12-12-12	0.75	0.75	0.75
2012-16-16-16	2015-16-16-16	1.00	1.00	1.00
2012-20-20-20	2015-20-20-20	1.25	1.25	1.25
2012-24-24-24	2015-24-24-24	1.50	1.50	1.50
2012-32-32-32	2015-32-32-32	2.00	2.00	2.00

COMES COMPLETE WITH BOLT KIT



### Companion / ORF / ORB

Code 61 Part No.	Code 62 Part No.	Side A (Comp)	Side B (ORF)	Side C (ORB)
2375-08-08-08	2498-08-08-08	0.50	0.50	#8 (3/4"-16)
2375-12-12-12	2498-12-12-12	0.75	0.75	#12 (1-1/16"-12)
2375-16-16-16	2498-16-16-16	1.00	1.00	#16 (1-5/16"-12)
2375-20-20-20	2498-20-20-20	1.25	1.25	#20 (1-5/8"-12)
2375-24-24-24	2498-24-24-24	1.50	1.50	#24 (1-7/8"-12)
2375-32-32-32	2498-32-32-32	2.00	2.00	#32 (2-1/2"-12)

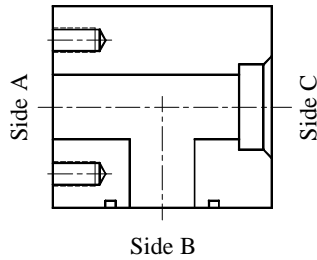
COMES COMPLETE WITH BOLT KIT

### Companion / ORF / NPT

Code 61 Part No.	Code 62 Part No.	Side A (Comp)	Side B (ORF)	Side C (NPT)
2376-08-08-08	2499-08-08-08	0.50	0.50	1/2"-14
2376-12-12-12	2499-12-12-12	0.75	0.75	3/4"-14
2376-16-16-16	2499-16-16-16	1.00	1.00	1"-11.5
2376-20-20-20	2499-20-20-20	1.25	1.25	1-1/4"-11.5
2376-24-24-24	2499-24-24-24	1.50	1.50	1-1/2"-11.5
2376-32-32-32	2499-32-32-32	2.00	2.00	2"-11.5

COMES COMPLETE WITH BOLT KIT

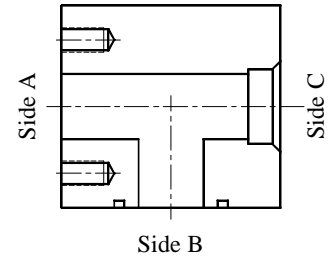
## Code 61 & Code 62 4-Bolt Tees



**Companion / ORF / SWP**

Code 61 Part No.	Code 62 Part No.	Side A (Comp)	Side B (ORF)	Side C (SWP)
2373-08-08-08	2496-08-08-08	0.50	0.50	1/2
2373-12-12-12	2496-12-12-12	0.75	0.75	3/4
2373-16-16-16	2496-16-16-16	1.00	1.00	1
2373-20-20-20	2496-20-20-20	1.25	1.25	1-1/4
2373-24-24-24	2496-24-24-24	1.50	1.50	1-1/2
2373-32-32-32	2496-32-32-32	2.00	2.00	2

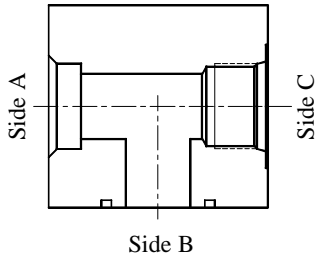
COMES COMPLETE WITH BOLT KIT



**Companion / ORF / SWT**

Code 61 Part No.	Code 62 Part No.	Side A (Comp)	Side B (ORF)	Side C (SWT)
2374-08-08-08	2497-08-08-08	0.50	0.50	0.50
2374-12-12-12	2497-12-12-12	0.75	0.75	0.75
2374-16-16-20	2497-16-16-20	1.00	1.00	1.25
2374-20-20-24	2497-20-20-24	1.25	1.25	1.50
2374-24-24-32	2497-24-24-32	1.50	1.50	2.00
2374-32-32-32	2497-32-32-32	2.00	2.00	2.00

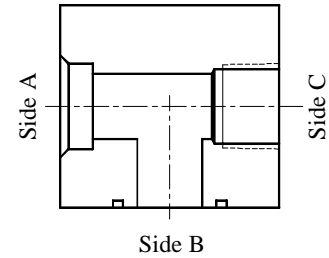
COMES COMPLETE WITH BOLT KIT



**SWP / ORF / ORB**

Code 61 Part No.	Code 62 Part No.	Side A (SWP)	Side B (ORF)	Side C (ORB)
2401-08-08-08	2442-08-08-08	1/2	0.50	#8 (3/4"-16)
2401-12-12-12	2442-12-12-12	3/4	0.75	#12 (1-1/16"-12)
2401-16-16-16	2442-16-16-16	1	1.00	#16 (1-5/16"-12)
2401-20-20-20	2442-20-20-20	1-1/4	1.25	#20 (1-5/8"-12)
2401-24-24-24	2442-24-24-24	1-1/2	1.50	#24 (1-7/8"-12)
2401-32-32-32	2442-32-32-32	2	2.00	#32 (2-1/2"-12)

COMES COMPLETE WITH BOLT KIT

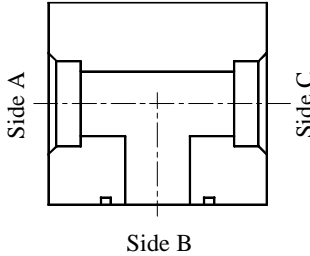


**SWP / ORF / NPT**

Code 61 Part No.	Code 62 Part No.	Side A (SWP)	Side B (ORF)	Side C (NPT)
2402-08-08-08	2443-08-08-08	1/2	0.50	1/2"-14
2402-12-12-12	2443-12-12-12	3/4	0.75	3/4"-14
2402-16-16-16	2443-16-16-16	1	1.00	1"-11.5
2402-20-20-20	2443-20-20-20	1-1/4	1.25	1-1/4"-11.5
2402-24-24-24	2443-24-24-24	1-1/2	1.50	1-1/2"-11.5
2402-32-32-32	2443-32-32-32	2	2.00	2"-11.5

COMES COMPLETE WITH BOLT KIT

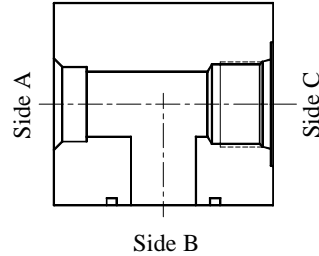
## Code 61 & Code 62 4-Bolt Tees



**SWP / ORF / SWP**

Code 61 Part No.	Code 62 Part No.	Side A (SWP)	Side B (ORF)	Side C (SWP)
2014-08-08-08	2017-08-08-08	1/2	0.50	1/2
2014-12-12-12	2017-12-12-12	3/4	0.75	3/4
2014-16-16-16	2017-16-16-16	1	1.00	1
2014-20-20-20	2017-20-20-20	1-1/4	1.25	1-1/4
2014-24-24-24	2017-24-24-24	1-1/2	1.50	1-1/2
2014-32-32-32	2017-32-32-32	2	2.00	2

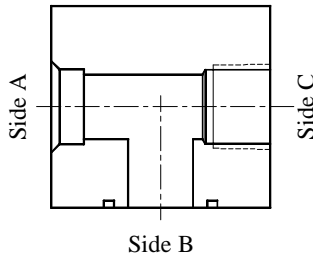
COMES COMPLETE WITH BOLT KIT



**SWT / ORF / ORB**

Code 61 Part No.	Code 62 Part No.	Side A (SWT)	Side B (ORF)	Side C (ORB)
2407-08-08-08	2448-08-08-08	0.50	0.50	#8 (3/4"-16)
2407-12-12-12	2448-12-12-12	0.75	0.75	#12 (1-1/16"-12)
2407-16-16-16	2448-16-16-12	1.00	1.00	#16 (1-5/16"-12)
2407-20-16-16	2448-20-16-16	1.25	1.00	#16 (1-5/16"-12)
2407-24-20-20	2448-24-20-20	1.50	1.25	#20 (1-5/8"-12)
2407-32-24-24	2448-32-24-24	2.00	1.50	#24 (1-7/8"-12)
2407-32-32-32	2448-32-32-32	2.00	2.00	#32 (2-1/2"-12)

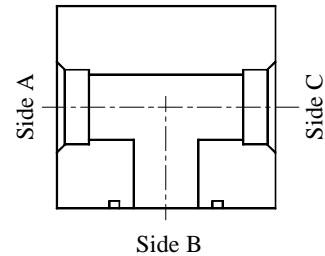
COMES COMPLETE WITH BOLT KIT



**SWT / ORF / NPT**

Code 61 Part No.	Code 62 Part No.	Side A (SWT)	Side B (ORF)	Side C (NPT)
2408-08-08-08	2449-08-08-08	0.50	0.50	1/2"-14
2408-12-12-12	2449-12-12-12	0.75	0.75	3/4"-14
2408-16-16-16	2449-16-16-16	1.00	1.00	1"-11.5
2408-20-16-16	2449-20-16-16	1.25	1.00	1"-11.5
2408-24-20-20	2449-24-20-20	1.50	1.25	1-1/4"-11.5
2408-32-24-24	2449-32-24-24	2.00	1.50	1-1/2"-11.5
2408-32-32-32	2449-32-32-32	2.00	2.00	2"-11.5

COMES COMPLETE WITH BOLT KIT

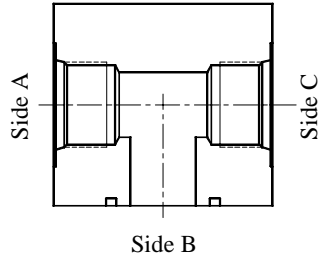


**SWT / ORF / SWT**

Code 61 Part No.	Code 62 Part No.	Side A (SWT)	Side B (ORF)	Side C (SWT)
2406-08-08-08	2447-08-08-08	0.50	0.50	0.50
2406-12-12-12	2447-12-12-12	0.75	0.75	0.75
2406-16-16-16	2447-16-16-16	1.00	1.00	1.00
2406-20-16-20	2447-20-16-16	1.25	1.00	1.25
2406-24-20-24	2447-24-20-24	1.50	1.25	1.50
2406-32-24-32	2447-32-24-32	2.00	1.50	2.00
2406-32-32-32	2447-32-32-32	2.00	2.00	2.00

COMES COMPLETE WITH BOLT KIT

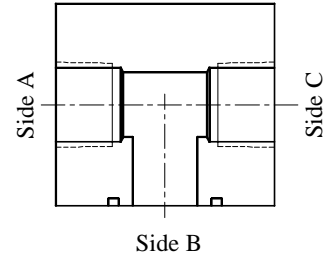
## Code 61 & Code 62 4-Bolt Tees



**ORB / ORF / ORB**

Code 61 Part No.	Code 62 Part No.	Side A (ORB)	Side B (ORF)	Side C (ORB)
2411-08-08-08	2452-08-08-08	#8 (3/4"-16)	0.50	#8 (3/4"-16)
2411-12-12-12	2452-12-12-12	#12 (1-1/16"-12)	0.75	#12 (1-1/16"-12)
2411-16-16-16	2452-16-16-16	#16 (1-5/16"-12)	1.00	#16 (1-5/16"-12)
2411-20-20-20	2452-20-20-20	#20 (1-5/8"-12)	1.25	#20 (1-5/8"-12)
2411-24-24-24	2452-24-24-24	#24 (1-7/8"-12)	1.50	#24 (1-7/8"-12)
2411-32-32-32	2452-32-32-32	#32 (2-1/2"-12)	2.00	#32 (2-1/2"-12)

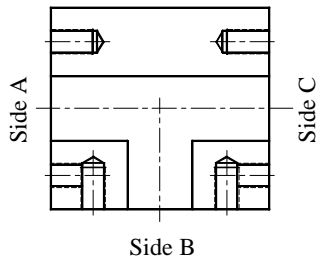
COMES COMPLETE WITH BOLT KIT



**NPT / ORF / NPT**

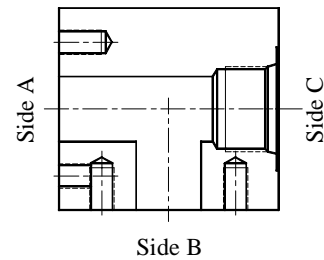
Code 61 Part No.	Code 62 Part No.	Side A (NPT)	Side B (ORF)	Side C (NPT)
2414-08-08-08	2544-08-08-08	1/2"-14	0.50	1/2"-14
2414-12-12-12	2544-12-12-12	3/4"-14	0.75	3/4"-14
2414-16-16-16	2544-16-16-16	1"-11.5	1.00	1"-11.5
2414-20-20-20	2544-20-20-20	1-1/4"-11.5	1.25	1-1/4"-11.5
2414-24-24-24	2544-24-24-24	1-1/2"-11.5	1.50	1-1/2"-11.5
2414-32-32-32	2544-32-32-32	2"-11.5	2.00	2"-11.5

COMES COMPLETE WITH BOLT KIT



**Companion / Companion / Companion**

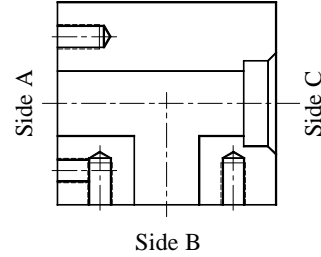
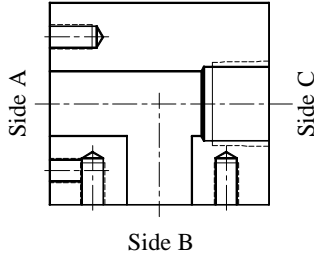
Code 61 Part No.	Code 62 Part No.	Side A (Comp)	Side B (Comp)	Side C (Comp)
1806-08-08-08	1807-08-08-08	0.50	0.50	0.50
1806-12-12-12	1807-12-12-12	0.75	0.75	0.75
1806-16-16-16	1807-16-16-16	1.00	1.00	1.00
1806-20-20-20	1807-20-20-20	1.25	1.25	1.25
1806-24-24-24	1807-24-24-24	1.50	1.50	1.50
1806-32-32-32	1807-32-32-32	2.00	2.00	2.00



**Companion / Companion / ORB**

Code 61 Part No.	Code 62 Part No.	Side A (Comp)	Side B (Comp)	Side C (ORB)
2371-08-08-08	2494-08-08-08	0.50	0.50	#8 (3/4"-16)
2371-12-12-12	2494-12-12-12	0.75	0.75	#12 (1-1/16"-12)
2371-16-16-16	2494-16-16-16	1.00	1.00	#16 (1-5/16"-12)
2371-20-20-20	2494-20-20-20	1.25	1.25	#20 (1-5/8"-12)
2371-24-24-24	2494-24-24-24	1.50	1.50	#24 (1-7/8"-12)
2371-32-32-32	2494-32-32-32	2.00	2.00	#32 (2-1/2"-12)

## Code 61 & Code 62 4-Bolt Tees

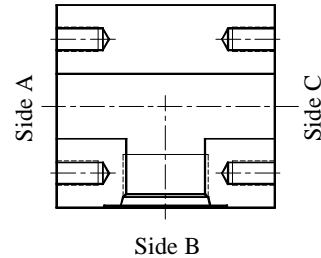
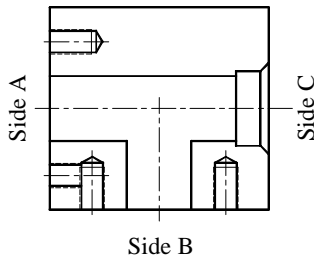


**Companion / Companion / NPT**

Code 61 Part No.	Code 62 Part No.	Side A (Comp)	Side B (Comp)	Side C (NPT)
2372-08-08-08	2495-08-08-08	0.50	0.50	1/2"-14
2372-12-12-12	2495-12-12-12	0.75	0.75	3/4"-14
2372-16-16-16	2495-16-16-16	1.00	1.00	1"-11.5
2372-20-20-20	2495-20-20-20	1.25	1.25	1-1/4"-11.5
2372-24-24-24	2495-24-24-24	1.50	1.50	1-1/2"-11.5
2372-32-32-32	2495-32-32-32	2.00	2.00	2"-11.5

**Companion / Companion / SWP**

Code 61 Part No.	Code 62 Part No.	Side A (Comp)	Side B (Comp)	Side C (SWP)
1966-08-08-08	1969-08-08-08	0.50	0.50	1/2
1966-12-12-12	1969-12-12-12	0.75	0.75	3/4
1966-16-16-16	1969-16-16-16	1.00	1.00	1
1966-20-20-20	1969-20-20-20	1.25	1.25	1-1/4
1966-24-24-24	1969-24-24-24	1.50	1.50	1-1/2
1966-32-32-32	1969-32-32-32	2.00	2.00	2



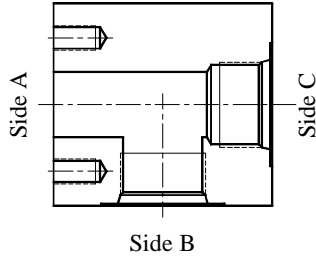
**Companion / Companion / SWT**

Code 61 Part No.	Code 62 Part No.	Side A (Comp)	Side B (Comp)	Side C (SWT)
2370-08-08-08	2493-08-08-08	0.50	0.50	0.50
2370-12-12-12	2493-12-12-12	0.75	0.75	0.75
2370-12-12-16	2493-12-12-16	0.75	0.75	1.00
2370-16-16-20	2493-16-16-20	1.00	1.00	1.25
2370-20-20-24	2493-20-20-24	1.25	1.25	1.50
2370-24-24-32	2493-24-24-32	1.50	1.50	2.00
2370-32-32-32	2493-32-32-32	2.00	2.00	2.00

**Companion / ORB / Companion**

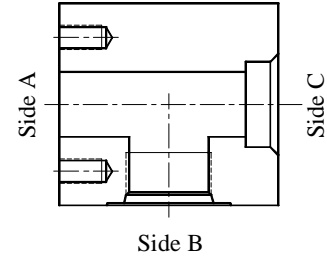
Code 61 Part No.	Code 62 Part No.	Side A (Comp)	Side B (ORB)	Side C (Comp)
2387-08-08-08	2510-08-08-08	0.50	#8 (3/4"-16)	0.50
2387-12-12-12	2510-12-12-12	0.75	#12 (1-1/16"-12)	0.75
2387-16-16-16	2510-16-16-16	1.00	#16 (1-5/16"-12)	1.00
2387-20-20-20	2510-20-20-20	1.25	#20 (1-5/8"-12)	1.25
2387-24-24-24	2510-24-24-24	1.50	#24 (1-7/8"-12)	1.50
2387-32-32-32	2510-32-32-32	2.00	#32 (2-1/2"-12)	2.00

## Code 61 & Code 62 4-Bolt Tees



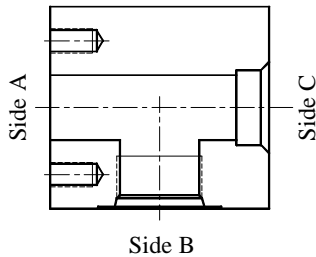
**Companion / ORB / ORB**

Code 61 Part No.	Code 62 Part No.	Side A (Comp)	Side B (ORB)	Side C (ORB)
2390-12-12-12	2513-12-12-12	0.75	#12 (1-1/16"-12)	#12 (1-1/16"-12)
2390-16-16-16	2513-16-16-16	1.00	#16 (1-5/16"-12)	#16 (1-5/16"-12)
2390-20-20-20	2513-20-20-20	1.25	#20 (1-5/8"-12)	#20 (1-5/8"-12)
2390-24-24-24	2513-24-24-24	1.50	#24 (1-7/8"-12)	#24 (1-7/8"-12)
2390-32-32-32	2513-32-32-32	2.00	#32 (2-1/2"-12)	#32 (2-1/2"-12)



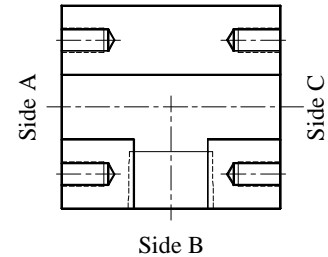
**Companion / ORB / SWP**

Code 61 Part No.	Code 62 Part No.	Side A (Comp)	Side B (ORB)	Side C (SWP)
2388-12-12-12	2511-12-12-12	0.75	#12 (1-1/16"-12)	3/4
2388-16-16-16	2511-16-16-16	1.00	#16 (1-5/16"-12)	1
2388-20-20-20	2511-20-20-20	1.25	#20 (1-5/8"-12)	1-1/4
2388-24-24-24	2511-24-24-24	1.50	#24 (1-7/8"-12)	1-1/2
2388-32-32-32	2511-32-32-32	2.00	#32 (2-1/2"-12)	2



**Companion / ORB / SWT**

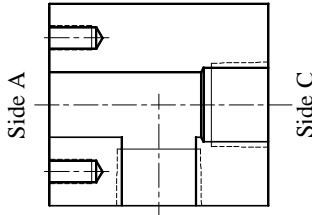
Code 61 Part No.	Code 62 Part No.	Side A (Comp)	Side B (ORB)	Side C (SWT)
2389-12-12-12	2512-12-12-12	0.75	#12 (1-1/16"-12)	0.75
2389-12-12-16	2512-12-12-16	0.75	#12 (1-1/16"-12)	1.00
2389-16-16-16	2512-16-16-16	1.00	#16 (1-5/16"-12)	1.00
2389-16-16-20	2512-16-16-20	1.00	#16 (1-5/16"-12)	1.25
2389-20-20-20	2512-20-20-20	1.25	#20 (1-5/8"-12)	1.25
2389-20-20-24	2512-20-20-24	1.25	#20 (1-5/8"-12)	1.50
2389-24-24-24	2512-24-24-24	1.50	#24 (1-7/8"-12)	1.50
2389-24-24-32	2512-24-24-32	1.50	#24 (1-7/8"-12)	2.00
2389-32-32-32	2512-32-32-32	2.00	#32 (2-1/2"-12)	2.00



**Companion / NPT / Companion**

Code 61 Part No.	Code 62 Part No.	Side A (Comp)	Side B (NPT)	Side C (Comp)
2392-12-12-12	2515-12-12-12	0.75	3/4"-14	0.75
2392-16-12-16	2515-16-12-16	1.00	3/4"-14	1.00
2392-16-16-16	2515-16-16-16	1.00	1"-11.5	1.00
2392-20-16-20	2515-20-16-20	1.25	1"-11.5	1.25
2392-20-20-20	2515-20-20-20	1.25	1-1/4"-11.5	1.25
2392-24-20-24	2515-24-20-24	1.50	1-1/4"-11.5	1.50
2392-24-24-24	2515-24-24-24	1.50	1-1/2"-11.5	1.50
2392-32-24-32	2515-32-24-32	2.00	1-1/2"-11.5	2.00
2392-32-32-32	2515-32-32-32	2.00	2"-11.5	2.00

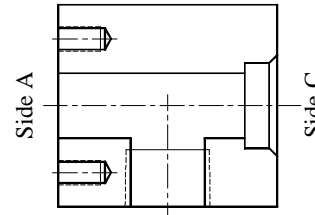
## Code 61 & Code 62 4-Bolt Tees



Side B

**Companion / NPT / NPT**

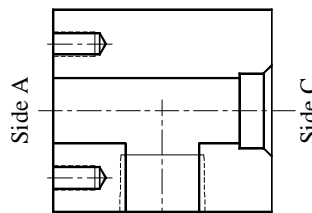
Code 61 Part No.	Code 62 Part No.	Side A (Comp)	Side B (NPT)	Side C (NPT)
2396-12-12-12	2519-12-12-12	0.75	3/4"-14	3/4"-14
2396-16-12-12	2519-16-12-12	1.00	3/4"-14	3/4"-14
2396-16-16-16	2519-16-16-16	1.00	1"-11.5	1"-11.5
2396-20-16-16	2519-20-16-16	1.25	1"-11.5	1"-11.5
2396-20-20-20	2519-20-20-20	1.25	1-1/4"-11.5	1-1/4"-11.5
2396-24-20-20	2519-24-20-20	1.50	1-1/4"-11.5	1-1/4"-11.5
2396-24-24-24	2519-24-24-24	1.50	1-1/2"-11.5	1-1/2"-11.5
2396-32-24-24	2519-32-24-24	2.00	1-1/2"-11.5	1-1/2"-11.5
2396-32-32-32	2519-32-32-32	2.00	2"-11.5	2"-11.5



Side B

**Companion / NPT / SWP**

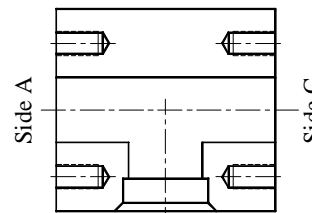
Code 61 Part No.	Code 62 Part No.	Side A (Comp)	Side B (NPT)	Side C (SWP)
2393-12-12-12	2516-12-12-12	0.75	3/4"-14	3/4
2393-16-12-12	2516-16-12-12	1.00	3/4"-14	3/4
2393-16-16-16	2516-16-16-16	1.00	1"-11.5	1
2393-20-16-16	2516-20-16-16	1.25	1"-11.5	1
2393-20-20-20	2516-20-20-20	1.25	1-1/4"-11.5	1-1/4
2393-24-20-20	2516-24-20-20	1.50	1-1/4"-11.5	1-1/4
2393-24-24-24	2516-24-24-24	1.50	1-1/2"-11.5	1-1/2
2393-32-24-24	2516-32-24-24	2.00	1-1/2"-11.5	1-1/2
2393-32-32-32	2516-32-32-32	2.00	2"-11.5	2



Side B

**Companion / NPT / SWT**

Code 61 Part No.	Code 62 Part No.	Side A (Comp)	Side B (NPT)	Side C (SWT)
2394-12-12-12	2517-12-12-12	0.75	3/4"-14	0.75
2394-12-12-16	2517-12-12-16	0.75	3/4"-14	1.00
2394-16-16-16	2517-16-16-16	1.00	1"-11.5	1.00
2394-16-16-20	2517-16-16-20	1.00	1"-11.5	1.25
2394-20-20-20	2517-20-20-20	1.25	1-1/4"-11.5	1.25
2394-20-20-24	2517-20-20-24	1.25	1-1/4"-11.5	1.50
2394-24-24-24	2517-24-24-24	1.50	1-1/2"-11.5	1.50
2394-24-24-32	2517-24-24-32	1.50	1-1/2"-11.5	2.00
2394-32-32-32	2517-32-32-32	2.00	2"-11.5	2.00

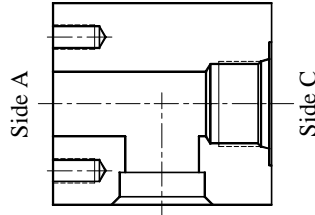


Side B

**Companion / SWP / Companion**

Code 61 Part No.	Code 62 Part No.	Side A (Comp)	Side B (SWP)	Side C (Comp)
2377-12-12-12	2500-12-12-12	0.75	3/4	0.75
2377-16-12-16	2500-16-12-16	1.00	3/4	1.00
2377-16-16-16	2500-16-16-16	1.00	1	1.00
2377-20-16-20	2500-20-16-20	1.25	1	1.25
2377-20-20-20	2500-20-20-20	1.25	1-1/4	1.25
2377-24-20-24	2500-24-20-24	1.50	1-1/4	1.50
2377-24-24-24	2500-24-24-24	1.50	1-1/2	1.50
2377-32-24-32	2500-32-24-32	2.00	1-1/2	2.00
2377-32-32-32	2500-32-32-32	2.00	2	2.00

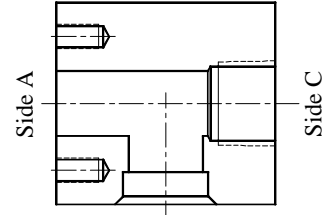
## Code 61 & Code 62 4-Bolt Tees



Side B

Companion / SWP / ORB

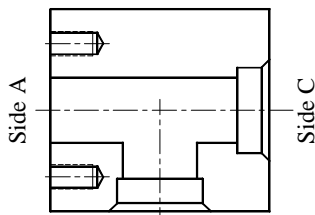
Code 61 Part No.	Code 62 Part No.	Side A (Comp)	Side B (SWP)	Side C (ORB)
2380-12-12-12	2503-12-12-12	0.75	3/4	#12 (1-1/16"-12)
2380-16-12-12	2503-16-12-12	1.00	3/4	#12 (1-1/16"-12)
2380-16-16-16	2503-16-16-16	1.00	1	#16 (1-5/16"-12)
2380-20-16-16	2503-20-16-16	1.25	1	#16 (1-5/16"-12)
2380-20-20-20	2503-20-20-20	1.25	1-1/4	#20 (1-5/8"-12)
2380-24-20-20	2503-24-20-20	1.50	1-1/4	#20 (1-5/8"-12)
2380-24-24-24	2503-24-24-24	1.50	1-1/2	#24 (1-7/8"-12)
2380-32-24-24	2503-32-24-24	2.00	1-1/2	#24 (1-7/8"-12)
2380-32-32-32	2503-32-32-32	2.00	2	#32 (2-1/2"-12)



Side B

Companion / SWP / NPT

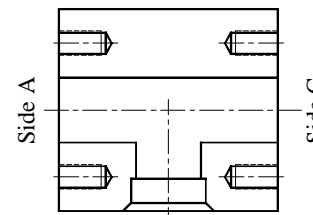
Code 61 Part No.	Code 62 Part No.	Side A (Comp)	Side B (SWP)	Side C (NPT)
2381-12-12-12	2504-12-12-12	0.75	3/4	3/4"-14
2381-16-12-12	2504-16-12-12	1.00	3/4	3/4"-14
2381-16-16-16	2504-16-16-16	1.00	1	1"-11.5
2381-20-16-16	2504-20-16-16	1.25	1	1"-11.5
2381-20-20-20	2504-20-20-20	1.25	1-1/4	1-1/4"-11.5
2381-24-20-20	2504-24-20-20	1.50	1-1/4	1-1/4"-11.5
2381-24-24-24	2504-24-24-24	1.50	1-1/2	1-1/2"-11.5
2381-32-24-24	2504-32-24-24	2.00	1-1/2	1-1/2"-11.5
2381-32-32-32	2504-32-32-32	2.00	2	2"-11.5



Side B

Companion / SWP / SWP

Code 61 Part No.	Code 62 Part No.	Side A (Comp)	Side B (SWP)	Side C (SWP)
2378-12-12-12	2501-12-12-12	0.75	3/4	3/4
2378-16-12-12	2501-16-12-12	1.00	3/4	3/4
2378-16-16-16	2501-16-16-16	1.00	1	1
2378-20-16-16	2501-20-16-16	1.25	1	1
2378-20-20-20	2501-20-20-20	1.25	1-1/4	1-1/4
2378-24-20-20	2501-24-20-20	1.50	1-1/4	1-1/4
2378-24-24-24	2501-24-24-24	1.50	1-1/2	1-1/2
2378-32-24-24	2501-32-24-24	2.00	1-1/2	1-1/2
2378-32-32-32	2501-32-32-32	2.00	2	2

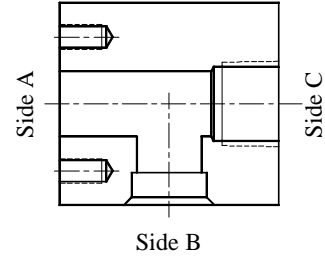
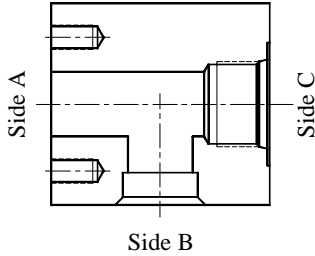


Side B

Companion / SWT / Companion

Code 61 Part No.	Code 62 Part No.	Side A (Comp)	Side B (SWT)	Side C (Comp)
2382-12-12-12	2505-12-12-12	0.75	0.75	0.75
2382-12-16-12	2505-12-16-12	0.75	1.00	0.75
2382-16-16-16	2505-16-16-16	1.00	1.00	1.00
2382-16-20-16	2505-16-20-16	1.00	1.25	1.00
2382-20-20-20	2505-20-20-20	1.25	1.25	1.25
2382-20-24-20	2505-20-24-20	1.25	1.50	1.25
2382-24-24-24	2505-24-24-24	1.50	1.50	1.50
2382-24-32-24	2505-24-32-24	1.50	2.00	1.50
2382-32-32-32	2505-32-32-32	2.00	2.00	2.00

## Code 61 & Code 62 4-Bolt Tees

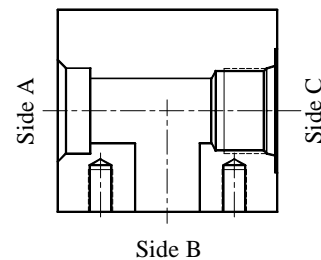
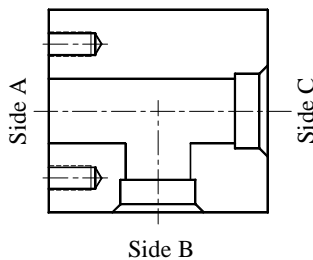


**Companion / SWT / ORB**

Code 61 Part No.	Code 62 Part No.	Side A (Comp)	Side B (SWT)	Side C (ORB)
2385-12-12-12	2508-12-12-12	0.75	0.75	#12 (1-1/16"-12)
2385-16-12-12	2508-16-12-12	1.00	0.75	#12 (1-1/16"-12)
2385-16-16-16	2508-16-16-16	1.00	1.00	#16 (1-5/16"-12)
2385-20-16-16	2508-20-16-16	1.25	1.00	#16 (1-5/16"-12)
2385-20-20-20	2508-20-20-20	1.25	1.25	#20 (1-5/8"-12)
2385-24-20-20	2508-24-20-20	1.50	1.25	#20 (1-5/8"-12)
2385-24-24-24	2508-24-24-24	1.50	1.50	#24 (1-7/8"-12)
2385-32-24-24	2508-32-24-24	2.00	1.50	#24 (1-7/8"-12)
2385-32-32-32	2508-32-32-32	2.00	2.00	#32 (2-1/2"-12)

**Companion / SWT / NPT**

Code 61 Part No.	Code 62 Part No.	Side A (Comp)	Side B (SWT)	Side C (NPT)
2386-12-12-12	2509-12-12-12	0.75	0.75	3/4"-14
2386-16-16-12	2509-16-16-12	1.00	1.00	3/4"-14
2386-16-20-16	2509-16-20-16	1.00	1.25	1"-11.5
2386-20-20-16	2509-20-20-16	1.25	1.25	1"-11.5
2386-20-24-20	2509-20-24-20	1.25	1.50	1-1/4"-11.5
2386-24-24-20	2509-24-24-20	1.50	1.50	1-1/4"-11.5
2386-24-32-24	2509-24-32-24	1.50	2.00	1-1/2"-11.5
2386-32-32-24	2509-32-32-24	2.00	2.00	1-1/2"-11.5
2386-32-32-32	2509-32-32-32	2.00	2.00	2"-11.5



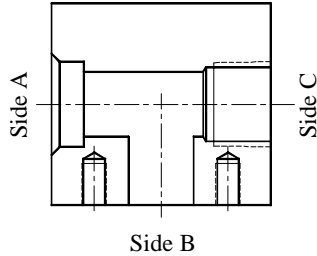
**Companion / SWT / SWT**

Code 61 Part No.	Code 62 Part No.	Side A (Comp)	Side B (SWT)	Side C (SWT)
2384-12-12-12	2507-12-12-12	0.75	0.75	0.75
2384-16-16-16	2507-16-16-16	1.00	1.00	1.00
2384-16-20-20	2507-16-20-20	1.00	1.25	1.25
2384-20-20-20	2507-20-20-20	1.25	1.25	1.25
2384-20-24-24	2507-20-24-24	1.25	1.50	1.50
2384-24-24-24	2507-24-24-24	1.50	1.50	1.50
2384-24-32-32	2507-24-32-32	1.50	2.00	2.00
2384-32-32-32	2507-32-32-32	2.00	2.00	2.00

**SWP / Companion / ORB**

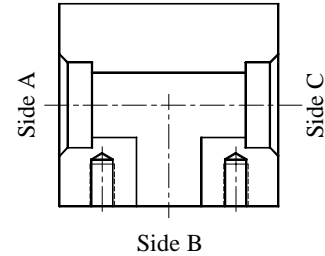
Code 61 Part No.	Code 62 Part No.	Side A (SWP)	Side B (Comp)	Side C (ORB)
2398-12-12-12	2439-12-12-12	3/4	0.75	#12 (1-1/16"-12)
2398-16-12-12	2439-16-12-12	3/4	1.00	#12 (1-1/16"-12)
2398-16-16-16	2439-16-16-16	1	1.00	#16 (1-5/16"-12)
2398-20-16-16	2439-20-16-16	1	1.25	#16 (1-5/16"-12)
2398-20-20-20	2439-20-20-20	1-1/4	1.25	#20 (1-5/8"-12)
2398-24-20-20	2439-24-20-20	1-1/4	1.50	#20 (1-5/8"-12)
2398-24-24-24	2439-24-24-24	1-1/2	1.50	#24 (1-7/8"-12)
2398-32-24-24	2439-32-24-24	1-1/2	2.00	#24 (1-7/8"-12)
2398-32-32-32	2439-32-32-32	2	2.00	#32 (2-1/2"-12)

## Code 61 & Code 62 4-Bolt Tees



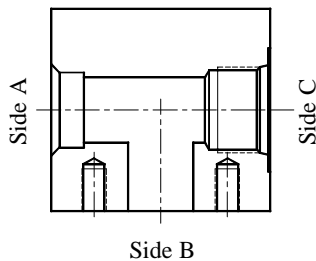
**SWP / Companion / NPT**

Code 61 Part No.	Code 62 Part No.	Side A (SWP)	Side B (Comp)	Side C (NPT)
2399-12-12-12	2440-12-12-12	3/4	0.75	3/4"-14
2399-16-12-12	2440-16-12-12	3/4	1.00	3/4"-14
2399-16-16-16	2440-16-16-16	1	1.00	1"-11.5
2399-20-16-16	2440-20-16-16	1	1.25	1"-11.5
2399-20-20-20	2440-20-20-20	1-1/4	1.25	1-1/4"-11.5
2399-24-20-20	2440-24-20-20	1-1/4	1.50	1-1/4"-11.5
2399-24-24-24	2440-24-24-24	1-1/2	1.50	1-1/2"-11.5
2399-32-24-24	2440-32-24-24	1-1/2	2.00	1-1/2"-11.5
2399-32-32-32	2440-32-32-32	2	2.00	2"-11.5



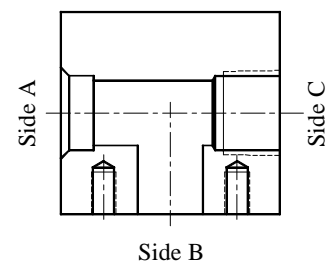
**SWP / Companion / SWP**

Code 61 Part No.	Code 62 Part No.	Side A (SWP)	Side B (Comp)	Side C (SWP)
1865-12-12-12	1879-12-12-12	3/4	0.75	3/4
1865-16-12-12	1879-16-12-12	3/4	1.00	3/4
1865-16-16-16	1879-16-16-16	1	1.00	1
1865-20-16-16	1879-20-16-16	1	1.25	1
1865-20-20-20	1879-20-20-20	1-1/4	1.25	1-1/4
1865-24-20-20	1879-24-20-20	1-1/4	1.50	1-1/4
1865-24-24-24	1879-24-24-24	1-1/2	1.50	1-1/2
1865-32-24-24	1879-32-24-24	1-1/2	2.00	1-1/2
1865-32-32-32	1879-32-32-32	2	2.00	2



**SWT / Companion / ORB**

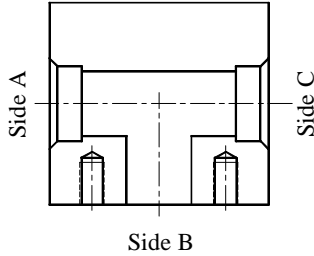
Code 61 Part No.	Code 62 Part No.	Side A (SWT)	Side B (Comp)	Side C (ORB)
2404-12-12-12	2445-12-12-12	0.75	0.75	#12 (1-1/16"-12)
2404-16-12-12	2445-16-12-12	1.00	0.75	#12 (1-1/16"-12)
2404-16-16-12	2445-16-16-12	1.00	1.00	#12 (1-1/16"-12)
2404-20-16-16	2445-20-16-16	1.25	1.00	#16 (1-5/16"-12)
2404-20-20-16	2445-20-20-16	1.25	1.25	#16 (1-5/16"-12)
2404-24-20-20	2445-24-20-20	1.50	1.25	#20 (1-5/8"-12)
2404-24-24-20	2445-24-24-20	1.50	1.50	#20 (1-5/8"-12)
2404-32-24-24	2445-32-24-24	2.00	1.50	#24 (1-7/8"-12)
2404-32-32-24	2445-32-32-24	2.00	2.00	#24 (1-7/8"-12)
2404-32-32-32	2445-32-32-32	2.00	2.00	#32 (2-1/2"-12)



**SWT / Companion / NPT**

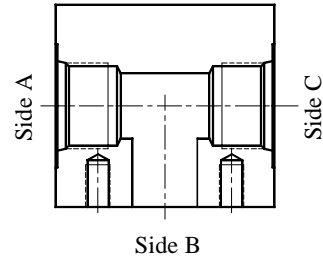
Code 61 Part No.	Code 62 Part No.	Side A (SWT)	Side B (Comp)	Side C (NPT)
2405-12-12-12	2446-12-12-12	0.75	0.75	3/4"-14
2405-16-12-12	2446-16-12-12	1.00	0.75	3/4"-14
2405-16-16-12	2446-16-16-12	1.00	1.00	3/4"-14
2405-20-16-16	2446-20-16-16	1.25	1.00	1"-11.5
2405-20-20-16	2446-20-20-16	1.25	1.25	1"-11.5
2405-24-20-20	2446-24-20-20	1.50	1.25	1-1/4"-11.5
2405-24-24-20	2446-24-24-20	1.50	1.50	1-1/4"-11.5
2405-32-24-24	2446-32-24-24	2.00	1.50	1-1/2"-11.5
2405-32-32-24	2446-32-32-24	2.00	2.00	1-1/2"-11.5
2405-32-32-32	2446-32-32-32	2.00	2.00	2"-11.5

## Code 61 & Code 62 4-Bolt Tees



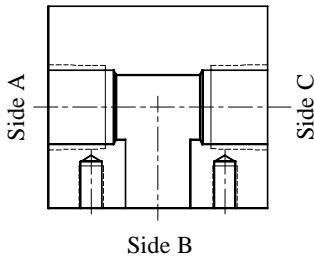
**SWT / Companion / SWT**

Code 61 Part No.	Code 62 Part No.	Side A (SWT)	Side B (Comp)	Side C (SWT)
2403-12-12-12	2444-12-12-12	0.75	0.75	0.75
2403-16-12-16	2444-16-12-16	1.00	0.75	1.00
2403-16-16-16	2444-16-16-16	1.00	1.00	1.00
2403-20-16-20	2444-20-16-20	1.25	1.00	1.25
2403-20-20-20	2444-20-20-20	1.25	1.25	1.25
2403-24-20-24	2444-24-20-24	1.50	1.25	1.50
2403-24-24-24	2444-24-24-24	1.50	1.50	1.50
2403-32-24-32	2444-32-24-32	2.00	1.50	2.00
2406-32-32-32	2444-32-32-32	2.00	2.00	2.00



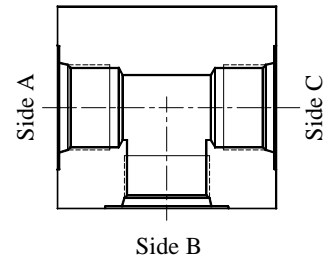
**ORB / Companion / ORB**

Code 61 Part No.	Code 62 Part No.	Side A (ORB)	Side B (Comp)	Side C (ORB)
2409-12-12-12	2450-12-12-12	#12 (1-1/16"-12)	0.75	#12 (1-1/16"-12)
2409-12-16-12	2450-12-16-12	#12 (1-1/16"-12)	1.00	#12 (1-1/16"-12)
2409-16-16-16	2450-16-16-16	#16 (1-5/16"-12)	1.00	#16 (1-5/16"-12)
2409-16-20-16	2450-16-20-16	#16 (1-5/16"-12)	1.25	#16 (1-5/16"-12)
2409-20-20-20	2450-20-20-20	#20 (1-5/8"-12)	1.25	#20 (1-5/8"-12)
2409-20-24-20	2450-20-24-20	#20 (1-5/8"-12)	1.50	#20 (1-5/8"-12)
2409-24-24-24	2450-24-24-24	#24 (1-7/8"-12)	1.50	#24 (1-7/8"-12)
2409-24-32-24	2450-24-32-24	#24 (1-7/8"-12)	2.00	#24 (1-7/8"-12)
2409-32-32-32	2450-32-32-32	#32 (2-1/2"-12)	2.00	#32 (2-1/2"-12)



**NPT / Companion / NPT**

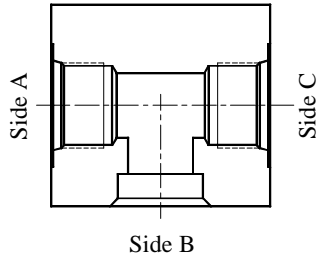
Code 61 Part No.	Code 62 Part No.	Side A (NPT)	Side B (Comp)	Side C (NPT)
2413-12-12-12	2543-12-12-12	3/4"-14	0.75	3/4"-14
2413-12-16-12	2543-12-16-12	3/4"-14	1.00	3/4"-14
2413-16-16-16	2543-16-16-16	1"-11.5	1.00	1"-11.5
2413-16-20-16	2543-16-20-16	1"-11.5	1.25	1"-11.5
2413-20-20-20	2543-20-20-20	1-1/4"-11.5	1.25	1-1/4"-11.5
2413-20-24-20	2543-20-24-20	1-1/4"-11.5	1.50	1-1/4"-11.5
2413-24-24-24	2543-24-24-24	1-1/2"-11.5	1.50	1-1/2"-11.5
2413-24-32-24	2543-24-32-24	1-1/2"-11.5	2.00	1-1/2"-11.5
2413-32-32-32	2543-32-32-32	2"-11.5	2.00	2"-11.5



**ORB / ORB / ORB**

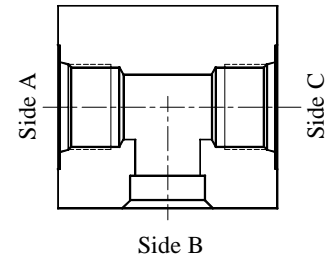
Part No.	Side A (ORB)	Side B (ORB)	Side C (ORB)
2485-08-08-08	#8 (3/4"-16)	#8 (3/4"-16)	#8 (3/4"-16)
2485-12-12-12	#12 (1-1/16"-12)	#12 (1-1/16"-12)	#12 (1-1/16"-12)
2485-16-16-16	#16 (1-5/16"-12)	#16 (1-5/16"-12)	#16 (1-5/16"-12)
2485-20-20-20	#20 (1-5/8"-12)	#20 (1-5/8"-12)	#20 (1-5/8"-12)
2485-24-24-24	#24 (1-7/8"-12)	#24 (1-7/8"-12)	#24 (1-7/8"-12)
2485-32-32-32	#32 (2-1/2"-12)	#32 (2-1/2"-12)	#32 (2-1/2"-12)

## Code 61 & Code 62 4-Bolt Tees



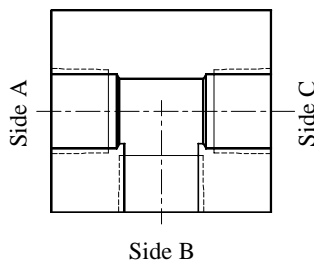
**ORB / SWP / ORB**

Part No.	Side A (ORB)	Side B (SWP)	Side C (ORB)
2481-16-16-16	#16 (1-5/16"-12)	1	#16 (1-5/16"-12)
2481-16-20-16	#16 (1-5/16"-12)	1-1/4	#16 (1-5/16"-12)
2481-20-20-20	#20 (1-5/8"-12)	1-1/4	#20 (1-5/8"-12)
2481-20-24-20	#20 (1-5/8"-12)	1-1/2	#20 (1-5/8"-12)
2481-24-24-24	#24 (1-7/8"-12)	1-1/2	#24 (1-7/8"-12)
2481-24-32-24	#24 (1-7/8"-12)	2	#24 (1-7/8"-12)
2481-32-32-32	#32 (2-1/2"-12)	2	#32 (2-1/2"-12)



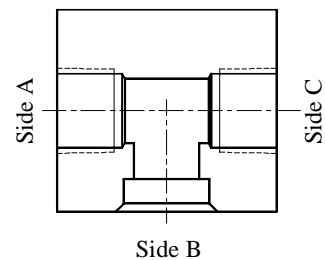
**ORB / SWT / ORB**

Part No.	Side A (ORB)	Side B (SWT)	Side C (ORB)
2483-12-16-12	#12 (1-1/16"-12)	1.00	#12 (1-1/16"-12)
2483-16-20-16	#16 (1-5/16"-12)	1.25	#16 (1-5/16"-12)
2483-20-24-20	#20 (1-5/8"-12)	1.50	#20 (1-5/8"-12)
2483-24-32-24	#24 (1-7/8"-12)	2.00	#24 (1-7/8"-12)
2483-32-32-32	#32 (2-1/2"-12)	2.00	#32 (2-1/2"-12)



**NPT / NPT / NPT**

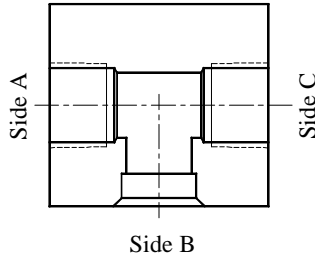
Part No.	Side A (NPT)	Side B (NPT)	Side C (NPT)
2492-12-12-12	3/4"-14	3/4"-14	3/4"-14
2492-16-16-16	1"-11.5	1"-11.5	1"-11.5
2492-20-20-20	1-1/4"-11.5	1-1/4"-11.5	1-1/4"-11.5
2492-24-24-24	1-1/2"-11.5	1-1/2"-11.5	1-1/2"-11.5
2492-32-32-32	2"-11.5	2"-11.5	2"-11.5



**NPT / SWP / NPT**

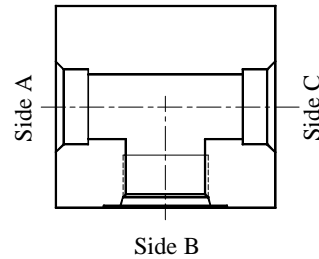
Part No.	Side A (NPT)	Side B (SWP)	Side C (NPT)
2489-12-12-12	3/4"-14	3/4	3/4"-14
2489-16-16-16	1"-11.5	1	1"-11.5
2489-20-20-20	1-1/4"-11.5	1-1/4	1-1/4"-11.5
2489-24-24-24	1-1/2"-11.5	1-1/2	1-1/2"-11.5
2489-32-32-32	2"-11.5	2	2"-11.5

## Weld-On & Threaded Tees



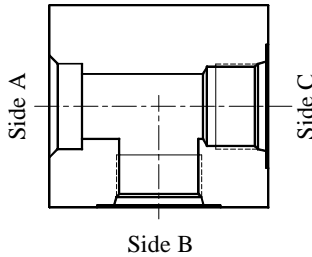
**NPT / SWT / NPT**

Part No.	Side A (NPT)	Side B (SWT)	Side C (NPT)
2490-12-16-12	3/4"-14	1	3/4"-14
2490-16-20-16	1"-11.5	1-1/4	1"-11.5
2490-20-24-20	1-1/4"-11.5	1-1/2	1-1/4"-11.5
2490-24-32-24	1-1/2"-11.5	2	1-1/2"-11.5



**SWP / ORB / SWP**

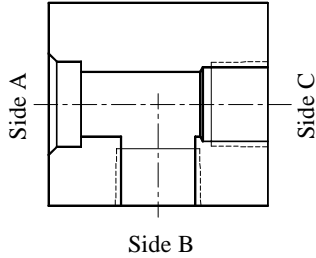
Part No.	Side A (SWP)	Side B (ORB)	Side C (SWP)
2058-12-08-12	3/4	#8 (3/4"-16)	3/4
2058-12-12-12	3/4	#12 (1-1/16"-12)	3/4
2058-16-08-16	1	#8 (3/4"-16)	1
2058-16-12-16	1	#12 (1-1/16"-12)	1
2058-16-16-16	1	#16 (1-5/16"-12)	1
2058-20-12-20	1-1/4	#12 (1-1/16"-12)	1-1/4
2058-20-16-20	1-1/4	#16 (1-5/16"-12)	1-1/4
2058-20-20-20	1-1/4	#20 (1-5/8"-12)	1-1/4
2058-24-12-24	1-1/2	#12 (1-1/16"-12)	1-1/2
2058-24-16-24	1-1/2	#16 (1-5/16"-12)	1-1/2
2058-24-20-24	1-1/2	#20 (1-5/8"-12)	1-1/2
2058-32-12-32	2	#12 (1-1/16"-12)	2
2058-32-16-32	2	#16 (1-5/16"-12)	2
2058-32-20-32	2	#20 (1-5/8"-12)	2
2058-40-16-40	2-1/2	#16 (1-5/16"-12)	2-1/2
2058-40-20-40	2-1/2	#20 (1-5/8"-12)	2-1/2
2058-48-16-48	3	#16 (1-5/16"-12)	3
2058-48-20-48	3	#20 (1-5/8"-12)	3
2058-64-16-64	4	#16 (1-5/16"-12)	4
2058-64-20-64	4	#20 (1-5/8"-12)	4



**SWP / ORB / ORB**

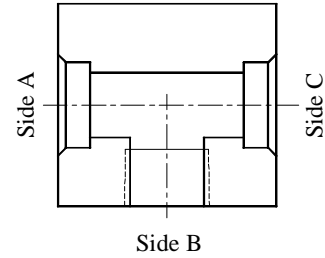
Part No.	Side A (SWP)	Side B (ORB)	Side C (ORB)
2463-12-12-12	3/4	#12 (1-1/16"-12)	#12 (1-1/16"-12)
2463-16-16-16	1	#16 (1-5/16"-12)	#16 (1-5/16"-12)
2463-20-20-20	1-1/4	#20 (1-5/8"-12)	#20 (1-5/8"-12)
2463-24-20-20	1-1/2	#20 (1-5/8"-12)	#20 (1-5/8"-12)
2463-24-24-24	1-1/2	#24 (1-7/8"-12)	#24 (1-7/8"-12)
2463-32-24-24	2	#24 (1-7/8"-12)	#24 (1-7/8"-12)
2463-32-32-32	2	#32 (2-1/2"-12)	#32 (2-1/2"-12)

## Weld-On & Threaded Tees



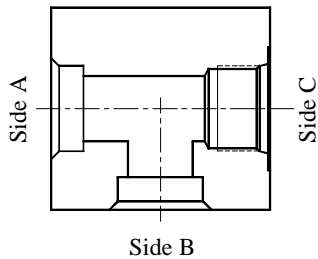
**SWP / NPT / NPT**

Part No.	Side A (SWP)	Side B (NPT)	Side C (NPT)
2468-12-12-12	3/4	3/4"-14	3/4"-14
2468-16-16-16	1	1"-11.5	1"-11.5
2468-20-20-20	1-1/4	1-1/4"-11.5	1-1/4"-11.5
2468-24-24-24	1-1/2	1-1/2"-11.5	1-1/2"-11.5
2468-32-32-32	2	2"-11.5	2"-11.5



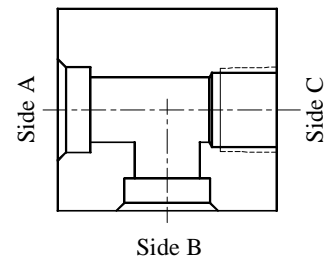
**SWP / NPT / SWP**

Part No.	Side A (SWP)	Side B (NPT)	Side C (SWP)
2465-12-12-12	3/4	3/4"-14	3/4
2465-16-16-16	1	1"-11.5	1
2465-20-20-20	1-1/4	1-1/4"-11.5	1-1/4
2465-24-24-24	1-1/2	1-1/2"-11.5	1-1/2
2465-32-32-32	2	2"-11.5	2



**SWP / SWP / ORB**

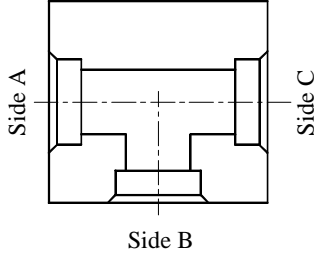
Part No.	Side A (SWP)	Side B (SWP)	Side C (ORB)
2456-12-12-12	3/4	3/4	#12 (1-1/16"-12)
2456-16-16-16	1	1	#16 (1-5/16"-12)
2456-20-20-20	1-1/4	1-1/4	#20 (1-5/8"-12)
2456-24-24-20	1-1/2	1-1/2	#20 (1-5/8"-12)
2456-24-24-24	1-1/2	1-1/2	#24 (1-7/8"-12)
2456-32-32-20	2	2	#20 (1-5/8"-12)
2456-32-32-24	2	2	#24 (1-7/8"-12)



**SWP / SWP / NPT**

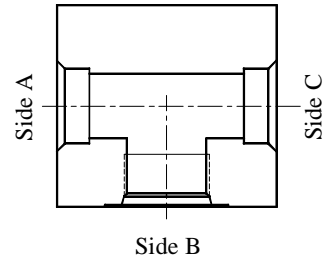
Part No.	Side A (SWP)	Side B (SWP)	Side C (NPT)
2457-12-12-12	3/4	3/4	3/4"-14
2457-16-16-16	1	1	1"-11.5
2457-20-20-20	1-1/2	1-1/2	1-1/4"-11.5
2457-24-24-24	1-1/2	1-1/2	1-1/2"-11.5
2457-32-32-32	2	2	2"-11.5
2457-40-40-40	2-1/2	2-1/2	2-1/2"-8

## Weld-On & Threaded Tees



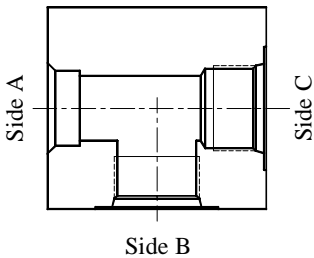
**SWP / SWP / SWP**

Part No.	Side A (SWP)	Side B (SWP)	Side C (SWP)
1893-16-16-16	1	1	1
1893-20-16-20	1-1/4	1	1-1/4
1893-20-20-20	1-1/4	1-1/4	1-1/4
1893-24-16-24	1-1/2	1	1-1/2
1893-24-20-24	1-1/2	1-1/4	1-1/2
1893-24-24-24	1-1/2	1-1/2	1-1/2
1893-32-20-32	2	1-1/4	2
1893-32-24-32	2	1-1/2	2
1893-32-32-32	2	2	2
1893-40-24-40	2-1/2	1-1/2	2-1/2
1893-40-32-40	2-1/2	2	2-1/2
1893-40-40-40	2-1/2	2-1/2	2-1/2
1893-48-24-48	3	1-1/2	3
1893-48-32-48	3	2	3
1893-48-40-48	3	2-1/2	3
1893-48-48-48	3	3	3
1893-64-32-64	4	2	4
1893-64-40-64	4	2-1/2	4
1893-64-48-64	4	3	4
1893-64-64-64	4	4	4



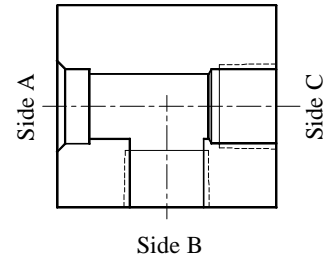
**SWT / ORB / SWT**

Part No.	Side A (SWT)	Side B (ORB)	Side C (SWT)
2475-12-12-12	0.75	#12 (1-1/16"-12)	0.75
2475-16-16-16	1.00	#16 (1-5/16"-12)	1.00
2475-20-20-20	1.25	#20 (1-5/8"-12)	1.25
2475-24-20-24	1.50	#20 (1-5/8"-12)	1.50
2475-24-24-24	1.50	#24 (1-7/8"-12)	1.50
2475-28-24-28	1.75	#24 (1-7/8"-12)	1.75
2475-32-20-32	2.00	#20 (1-5/8"-12)	2.00
2475-32-24-32	2.00	#24 (1-7/8"-12)	2.00
2475-32-32-32	2.00	#32 (2-1/2"-12)	2.00



**SWT / ORB / ORB**

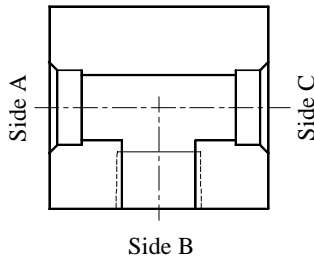
Part No.	Side A (SWT)	Side B (ORB)	Side C (ORB)
2476-12-12-12	0.75	#12 (1-1/16"-12)	#12 (1-1/16"-12)
2476-16-16-16	1.00	#16 (1-5/16"-12)	#16 (1-5/16"-12)
2476-20-20-20	1.25	#20 (1-5/8"-12)	#20 (1-5/8"-12)
2476-24-24-24	1.50	#24 (1-7/8"-12)	#24 (1-7/8"-12)
2476-28-24-24	1.75	#24 (1-7/8"-12)	#24 (1-7/8"-12)



**SWT / NPT / NPT**

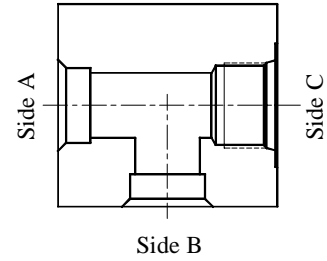
Part No.	Side A (SWT)	Side B (NPT)	Side C (NPT)
2480-16-12-12	1.00	3/4"-14	3/4"-14
2480-20-16-16	1.25	1"-11.5	1"-11.5
2480-24-20-20	1.50	1-1/4"-11.5	1-1/4"-11.5
2480-32-24-24	2.00	1-1/2"-11.5	1-1/2"-11.5
2480-32-32-32	2.00	2"-11.5	2"-11.5

## Weld-On & Threaded Tees



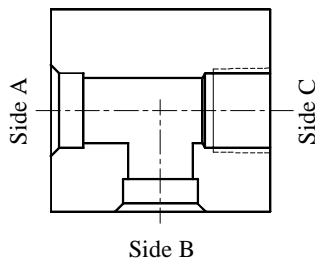
**SWT / NPT / SWT**

Part No.	Side A (SWT)	Side B (NPT)	Side C (SWT)
2478-16-12-16	1.00	3/4"-14	1.00
2478-20-16-20	1.25	1"-11.5	1.25
2478-24-20-24	1.50	1-1/4"-11.5	1.50
2478-32-24-32	2.00	1-1/2"-11.5	2.00
2478-32-32-32	2.00	2"-11.5	2.00



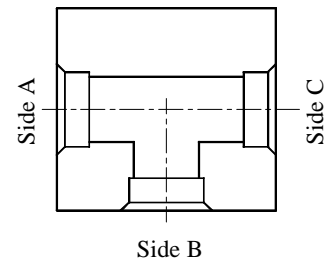
**SWT / SWT / ORB**

Part No.	Side A (SWT)	Side B (SWT)	Side C (ORB)
2473-16-16-12	1.00	1.00	#12 (1-1/16"-12)
2473-20-20-16	1.25	1.25	#16 (1-5/16"-12)
2473-24-24-20	1.50	1.50	#20 (1-5/8"-12)
2473-32-32-24	2.00	2.00	#24 (1-7/8"-12)
2473-32-32-32	2.00	2.00	#32 (2-1/2"-12)



**SWT / SWT / NPT**

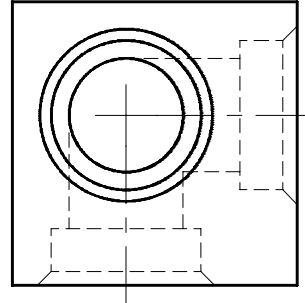
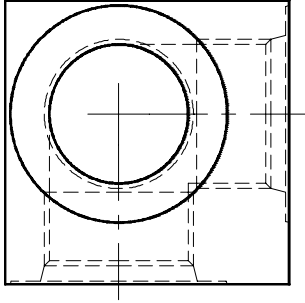
Part No.	Side A (SWT)	Side B (SWT)	Side C (NPT)
2474-16-16-12	1.00	1.00	3/4"-14
2474-20-20-16	1.25	1.25	1"-11.5
2474-24-24-20	1.50	1.50	1-1/4"-11.5
2474-32-32-24	2.00	2.00	1-1/2"-11.5
2474-32-32-32	2.00	2.00	2"-11.5



**SWT / SWT / SWT**

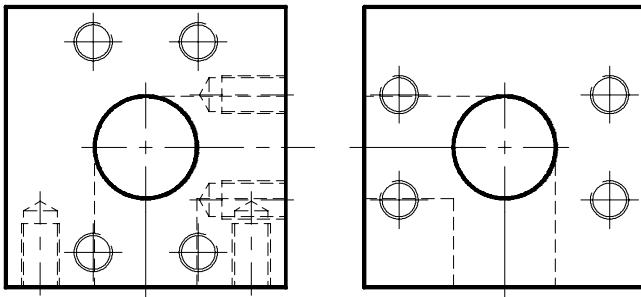
Part No.	Side A (SWT)	Side B (SWT)	Side C (SWT)
2472-12-12-12	0.75	0.75	0.75
2472-16-16-16	1.00	1.00	1.00
2472-20-20-20	1.25	1.25	1.25
2472-24-24-24	1.50	1.50	1.50
2472-28-28-28	1.75	1.75	1.75
2472-32-32-32	2.00	2.00	2.00

## Corner Tees

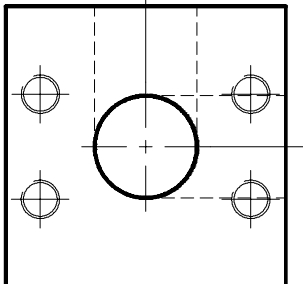


Part No.	ORB ports on three sides
3409-08-08-08	#8 (3/4"-16)
3409-12-12-12	#12 (1-1/16"-12)
3409-16-16-16	#16 (1-5/16"-12)
3409-20-20-20	#20 (1-5/8"-12)
3409-24-24-24	#24 (1-7/8"-12)
3409-32-32-32	#32 (2-1/2"-12)

Part No.	Socket Weld Pipe on three sides
3410-08-08-08	1/2"
3410-12-12-12	3/4"
3410-16-16-16	1"
3410-20-20-20	1-1/4"
3410-24-24-24	1-1/2"
3410-32-32-32	2"



Part No.	Code 61 Companion on three sides
3411-12-12-12	3/4"
3411-16-16-16	1"
3411-20-20-20	1-1/4"
3411-24-24-24	1-1/2"
3411-32-32-32	2"



Part No.	Code 62 Companion on three sides
3412-12-12-12	3/4"
3412-16-16-16	1"
3412-20-20-20	1-1/4"
3412-24-24-24	1-1/2"
3412-32-32-32	2"