

Crosses

O'Ring Boss

National Pipe Thread

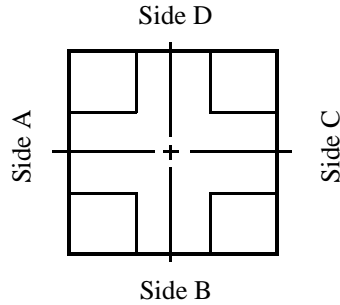
Socket Weld Pipe

Socket Weld Tube

4-Bolt Flange



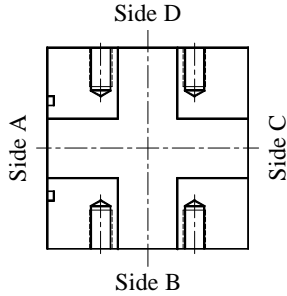
Crosses



All crosses have four sides. Side A, B, C, & D
Although most sizes shown are straight sizes,
Jump sizes are available upon request.
Contact our sales staff for sizes not shown in this catalog.

Side A	Side B	Side C	Side D	Page No.
ORF	Comp	Comp	Comp	47-3
ORF	ORB	Comp	ORB	47-3
ORF	ORB	ORB	ORB	47-3
ORF	SWP	Comp	SWP	47-3
Comp	Comp	Comp	Comp	47-4
Comp	Comp	Comp	SWP	47-4
Comp	ORB	ORB	ORB	47-4
Comp	ORB	SWP	ORB	47-4
Comp	SWP	Comp	SWP	47-5
SWP	ORB	SWP	ORB	47-5
SWP	SWP	SWP	SWP	47-5
SWP	ORB	ORB	ORB	47-5
SWP	NPT	NPT	NPT	47-6
ORB	ORB	ORB	ORB	47-6
NPT	NPT	NPT	NPT	47-6

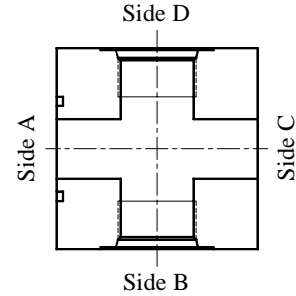
Crosses



Cross - ORF / Comp / Comp / Comp

Code 61 Part No.	Code 62 Part No.	Side A (ORF)	Side B (Comp)	Side C (Comp)	Side D (Comp)
2599-16-16-16-16	2635-16-16-16-16	1.00	1.00	1.00	1.00
2599-20-20-20-20	2635-20-20-20-20	1.25	1.25	1.25	1.25
2599-24-24-24-24	2635-24-24-24-24	1.50	1.50	1.50	1.50
2599-32-32-32-32	2635-32-32-32-32	2.00	2.00	2.00	2.00

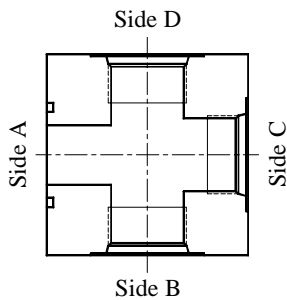
SANDWICH STYLE BLOCK, NO BOLTS SUPPLIED



Cross - ORF / ORB / Comp / ORB

Code 61 Part No.	Code 62 Part No.	Side A (ORF)	Side B (ORB)	Side C (Comp)	Side D (ORB)
2601-16-16-16-16	2637-16-16-16-16	1.00	#16	1.00	#16
2601-20-20-20-20	2637-20-20-20-20	1.25	#20	1.25	#20
2601-24-24-24-24	2637-24-24-24-24	1.50	#24	1.50	#24
2601-32-32-32-32	2637-32-32-32-32	2.00	#32	2.00	#32

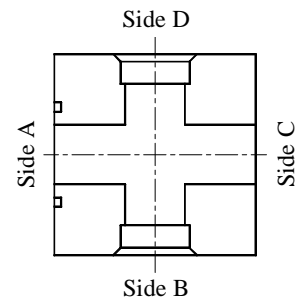
SANDWICH STYLE BLOCK, NO BOLTS SUPPLIED



Cross - ORF / ORB / ORB / ORB

Code 61 Part No.	Code 62 Part No.	Side A (ORF)	Side B (ORB)	Side C (ORB)	Side D (ORB)
2600-16-16-16-16	2636-16-16-16-16	1.00	#16	#16	#16
2600-20-20-20-20	2636-20-20-20-20	1.25	#20	#20	#20
2600-24-24-24-24	2636-24-24-24-24	1.50	#24	#24	#24
2600-32-32-32-32	2636-32-32-32-32	2.00	#32	#32	#32

COMES COMPLETE WITH BOLT KIT

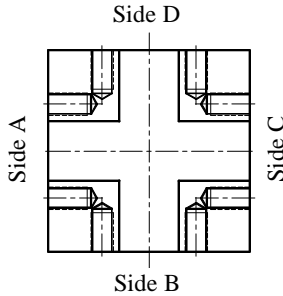


Cross - ORF / SWP / Comp / SWP

Code 61 Part No.	Code 62 Part No.	Side A (ORF)	Side B (SWP)	Side C (Comp)	Side D (SWP)
2598-16-16-16-16	2634-16-16-16-16	1.00	1	1.00	1
2598-20-20-20-20	2634-20-20-20-20	1.25	1-1/4	1.25	1-1/4
2598-24-24-24-24	2634-24-24-24-24	1.50	1-1/2	1.50	1-1/2
2598-32-32-32-32	2634-32-32-32-32	2.00	2	2.00	2

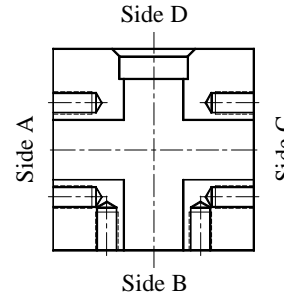
SANDWICH STYLE BLOCK, NO BOLTS SUPPLIED

Crosses



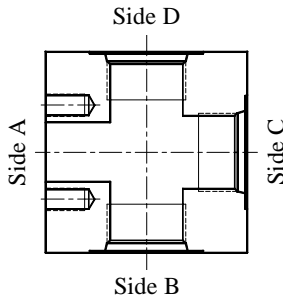
Cross - Comp / Comp / Comp / Comp

Code 61 Part No.	Code 62 Part No.	Side A (Comp)	Side B (Comp)	Side C (Comp)	Side D (Comp)
1810-16-16-16-16	1811-16-16-16-16	1.00	1.00	1.00	1.00
1810-20-20-20-20	1811-20-20-20-20	1.25	1.25	1.25	1.25
1810-24-24-24-24	1811-24-24-24-24	1.50	1.50	1.50	1.50
1810-32-32-32-32	1811-32-32-32-32	2.00	2.00	2.00	2.00



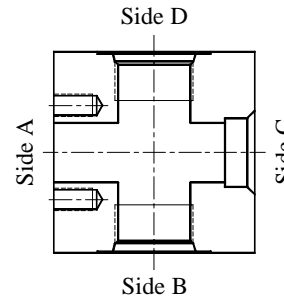
Cross - Comp / Comp / Comp / SWP

Code 61 Part No.	Code 62 Part No.	Side A (Comp)	Side B (Comp)	Side C (Comp)	Side D (SWP)
2596-16-16-16-16	2630-16-16-16-16	1.00	1.00	1.00	1
2596-20-20-20-20	2630-20-20-20-20	1.25	1.25	1.25	1-1/4
2596-24-24-24-24	2630-24-24-24-24	1.50	1.50	1.50	1-1/2
2596-32-32-32-32	2630-32-32-32-32	2.00	2.00	2.00	2



Cross - Comp / ORB / ORB / ORB

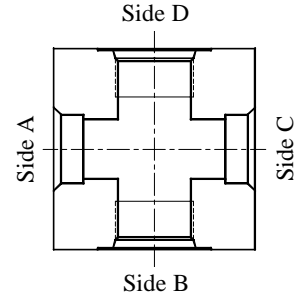
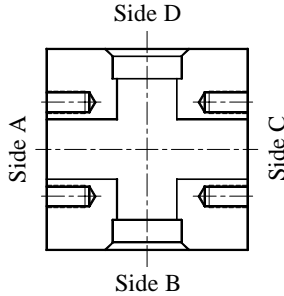
Code 61 Part No.	Code 62 Part No.	Side A (Comp)	Side B (ORB)	Side C (ORB)	Side D (ORB)
2628-16-16-16-16	2632-16-16-16-16	1.00	#16	#16	#16
2628-20-20-20-20	2632-20-20-20-20	1.25	#20	#20	#20
2628-24-24-24-24	2632-24-24-24-24	1.50	#24	#24	#24
2628-32-32-32-32	2632-32-32-32-32	2.00	#32	#32	#32



Cross - Comp / ORB / SWP / ORB

Code 61 Part No.	Code 62 Part No.	Side A (Comp)	Side B (ORB)	Side C (SWP)	Side D (ORB)
2572-16-16-16-16	2631-16-16-16-16	1.00	#16	1	#16
2572-20-20-20-20	2631-20-20-20-20	1.25	#20	1-1/4	#20
2572-24-24-24-24	2631-24-24-24-24	1.50	#24	1-1/2	#24
2572-32-32-32-32	2631-32-32-32-32	2.00	#32	2	#32

Crosses

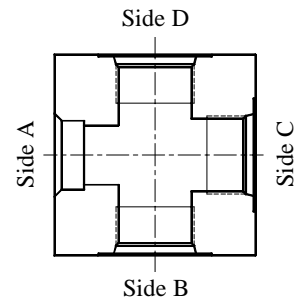
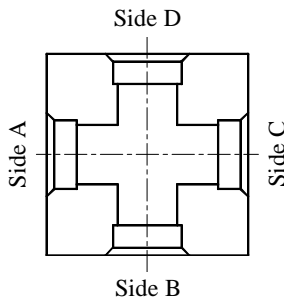


Cross - Comp / SWP / Comp / SWP

Code 61 Part No.	Code 62 Part No.	Side A (Comp)	Side B (SWP)	Side C (Comp)	Side D (SWP)
2597-16-16-16-16	2633-16-16-16-16	1.00	1	1.00	1
2597-20-20-20-20	2633-20-20-20-20	1.25	1-1/4	1.25	1-1/4
2597-24-24-24-24	2633-24-24-24-24	1.50	1-1/2	1.50	1-1/2
2597-32-32-32-32	2633-32-32-32-32	2.00	2	2.00	2

Cross - SWP / ORB / SWP / ORB

Part No.	Side A (SWP)	Side B (ORB)	Side C (SWP)	Side D (ORB)
2603-16-16-16-16	1	#16	1	#16
2603-20-20-20-20	1-1/4	#20	1-1/4	#20
2603-24-24-24-24	1-1/2	#24	1-1/2	#24
2603-32-32-32-32	2	#32	2	#32



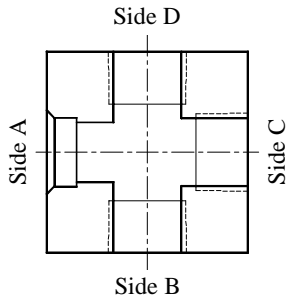
Cross - SWP / SWP / SWP / SWP

Part No.	Side A (SWP)	Side B (SWP)	Side C (SWP)	Side D (SWP)
2602-16-16-16-16	1	1	1	1
2602-20-20-20-20	1-1/4	1-1/4	1-1/4	1-1/4
2602-24-24-24-24	1-1/2	1-1/2	1-1/2	1-1/2
2602-32-32-32-32	2	2	2	2

Cross - SWP / ORB / ORB / ORB

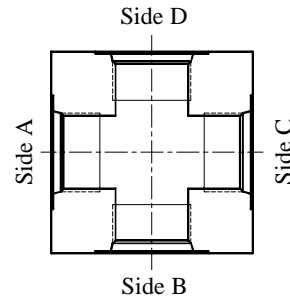
Part No.	Side A (SWP)	Side B (ORB)	Side C (ORB)	Side D (ORB)
2784-16-16-16-16	1	#16	#16	#16
2784-20-20-20-20	1-1/4	#20	#20	#20
2784-24-24-24-24	1-1/2	#24	#24	#24
2784-32-32-32-32	2	#32	#32	#32

Crosses



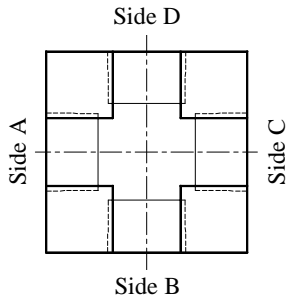
Cross - SWP / NPT / NPT / NPT

Part No.	Side A (SWP)	Side B (NPT)	Side C (NPT)	Side D (NPT)
2785-16-16-16-16	1	1"-11.5	1"-11.5	1"-11.5
2785-20-20-20-20	1-1/4	1.25"-11.5	1.25"-11.5	1.25"-11.5
2785-24-24-24-24	1-1/2	1.50"-11.5	1.50"-11.5	1.50"-11.5
2785-32-32-32-32	2	2.00"-11.5	2.00"-11.5	2.00"-11.5



Cross - ORB / ORB / ORB / ORB

Part No.	Side A (ORB)	Side B (ORB)	Side C (ORB)	Side D (ORB)
2627-16-16-16-16	#16	#16	#16	#16
2627-20-20-20-20	#20	#20	#20	#20
2627-24-24-24-24	#24	#24	#24	#24
2627-32-32-32-32	#32	#32	#32	#32



Cross - NPT / NPT / NPT / NPT

Part No.	Side A (NPT)	Side B (NPT)	Side C (NPT)	Side D (NPT)
2606-16-16-16-16	1"-11.5	1"-11.5	1"-11.5	1"-11.5
2606-20-20-20-20	1.25"-11.5	1.25"-11.5	1.25"-11.5	1.25"-11.5
2606-24-24-24-24	1.50"-11.5	1.50"-11.5	1.50"-11.5	1.50"-11.5
2606-32-32-32-32	2.00"-11.5	2.00"-11.5	2.00"-11.5	2.00"-11.5

