



## Code 61 O'Ring Head Adapters

Split Flange Kit

Plug

ORB Reducer

Union

Socket Weld Pipe

Socket Weld Tube

Butt Weld Pipe

Male ORB

Female ORB

Male NPT

Female NPT

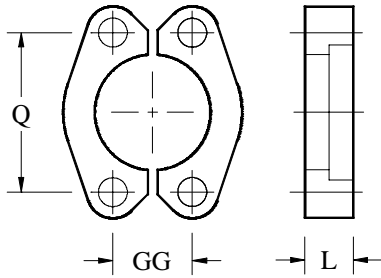
Male JIC

Male BSP

Pipe Stub



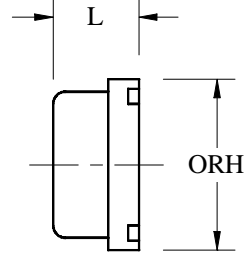
## Code 61 O'Ring Head Adapters



**Code 61 Split Flange Kit**

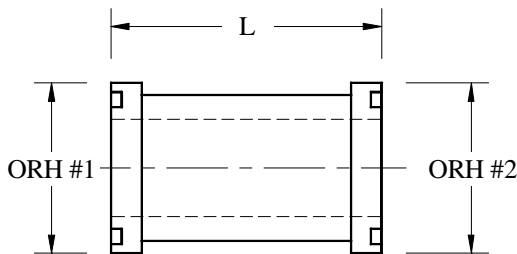
*Hex Head Mounting Kit Supplied*

Part No.	Size	Q	GG	L
1585-08	1/2"	1.50	0.69	0.50
1585-12	3/4"	1.88	0.88	0.56
1585-16	1.00"	2.06	1.03	0.63
1585-20	1.25"	2.31	1.19	0.56
1585-24	1.50"	2.75	1.41	0.63
1585-32	2.00"	3.06	1.69	0.63
1585-40	2.50"	3.50	2.00	0.88
1585-48	3.00"	4.19	2.44	1.00
1585-56	3.50"	4.75	2.75	1.00
1585-64	4.00"	5.13	3.06	1.25



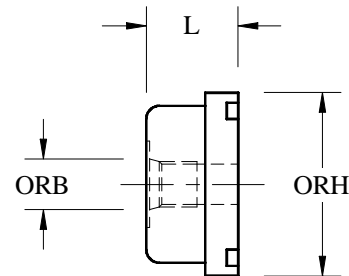
**Code 61 O'Ring Head Plug**

Part No.	ORH	L
1830-08	1/2"	0.63
1830-12	3/4"	0.69
1830-16	1.00"	0.69
1830-20	1.25"	0.69
1830-24	1.50"	0.75
1830-32	2.00"	0.75
1830-40	2.50"	0.81
1830-48	3.00"	0.88
1830-56	3.50"	1.00
1830-64	4.00"	1.13



**Code 61 O'Ring Head Union**

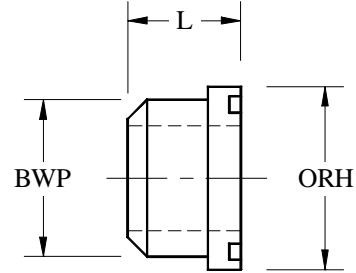
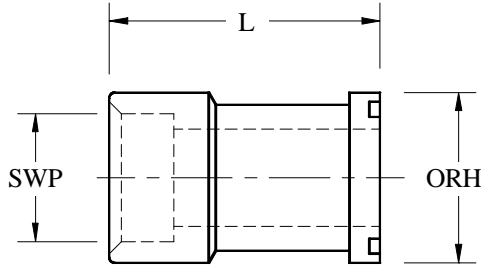
Part No.	ORH #1	ORH #2	L
1958-16-16	1.00	1.00	2.75
1958-16-20	1.00	1.25	2.84
1958-20-20	1.25	1.25	3.00
1958-20-24	1.25	1.50	3.13
1958-24-24	1.50	1.50	3.13
1958-24-32	1.50	2.00	3.13
1958-32-32	2.00	2.00	3.13
1958-32-40	2.00	2.50	3.38
1958-40-40	2.50	2.50	3.63
1958-40-48	2.50	3.00	3.88
1958-48-48	3.00	3.00	4.25
1958-48-56	3.00	3.50	4.25
1958-56-56	3.50	3.50	4.25
1958-56-64	3.50	4.00	4.50



**ORB / Code 61 O'Ring Head Plug**

Part No.	ORB	ORH	L
2732-06-20	#6 (9/16"-18)	1.25"	0.69
2732-06-24	#6 (9/16"-18)	1.50"	0.75
2732-12-24	#12 (1-1/16"-12)	1.50"	0.75
2732-06-32	#6 (9/16"-18)	2.00"	0.75
2732-12-32	#12 (1-1/16"-12)	2.00"	0.75
2732-16-32	#16 (1-5/16"-12)	2.00"	0.75
2732-08-40	#8 (3/4"-16)	2.50"	0.81
2732-12-40	#12 (1-1/16"-12)	2.50"	0.81
2732-16-40	#16 (1-5/16"-12)	2.50"	0.81
2732-08-48	#8 (3/4"-16)	3.00"	0.88
2732-12-48	#12 (1-1/16"-12)	3.00"	0.88
2732-16-48	#16 (1-5/16"-12)	3.00"	0.88
2732-08-56	#8 (3/4"-16)	3.50"	1.00
2732-12-56	#12 (1-1/16"-12)	3.50"	1.00
2732-16-56	#16 (1-5/16"-12)	3.50"	1.00
2732-08-64	#8 (3/4"-16)	4.00"	1.13
2732-12-64	#12 (1-1/16"-12)	4.00"	1.13
2732-16-64	#16 (1-5/16"-12)	4.00"	1.13

## Code 61 O'Ring Head Adapters



Socket Weld Pipe / Code 61 O'Ring Head

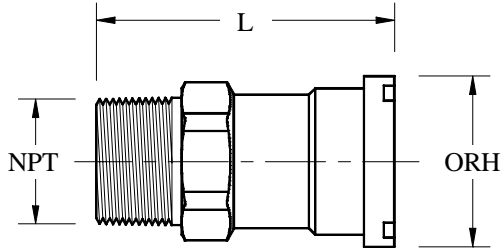
Part No.	SWP	ORH	L
1500-12-12	3/4" (1.055)	1/2"	2.19
1500-12-16	3/4" (1.055)	3/4"	1.50
1500-16-16	1.00" (1.320)	1.00"	2.19
1500-16-20	1.00" (1.320)	1.25"	1.63
1500-20-20	1.25" (1.670)	1.25"	2.50
1500-20-24	1.25" (1.670)	1.50"	2.63
1500-24-24	1.50" (1.910)	1.50"	2.63
1500-24-32	1.50" (1.910)	2.00"	1.75
1500-32-32	2.00" (2.385)	2.00"	2.75
1500-32-40	2.00" (2.385)	2.50"	2.00
1500-40-40	2.50" (2.888)	2.50"	3.25
1500-48-48	3.00" (3.515)	3.00"	3.38
1500-56-56	3.50" (4.015)	3.50"	3.75
1500-64-64	4.00" (4.515)	4.00"	3.75

Sch 80 Butt Weld Pipe / Code 61 O'Ring Head

Part No.	Sch 80 BWP	ORH	L
1604-16-16	1.00	1.00	1.00
1604-20-20	1.25	1.25	1.00
1604-24-20	1.50	1.25	1.50
1604-24-24	1.50	1.50	1.00
1604-32-24	2.00	1.50	2.00
1604-24-32	1.50	2.00	1.13
1604-32-32	2.00	2.00	1.13
1604-40-32	2.50	2.00	2.00
1604-32-40	2.00	2.50	1.25
1604-40-40	2.50	2.50	1.25
1604-48-40	3.00	2.50	2.25
1604-40-48	2.50	3.00	1.50
1604-48-48	3.00	3.00	1.50
1604-56-48	3.50	3.00	2.50
1604-64-48	4.00	3.00	2.50
1604-40-56	2.50	3.50	1.50
1604-48-56	3.00	3.50	1.50
1604-56-56	3.50	3.50	1.50
1604-64-56	4.00	3.50	2.50
1604-48-64	3.00	4.00	1.75
1604-56-64	3.50	4.00	1.75
1604-64-64	4.00	4.00	1.75

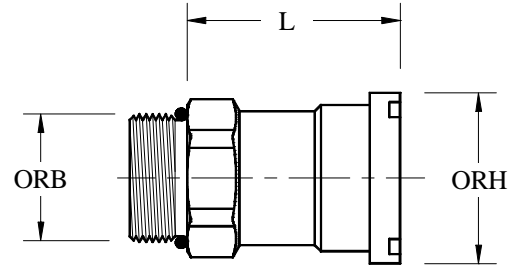


## Code 61 O'Ring Head Adapters



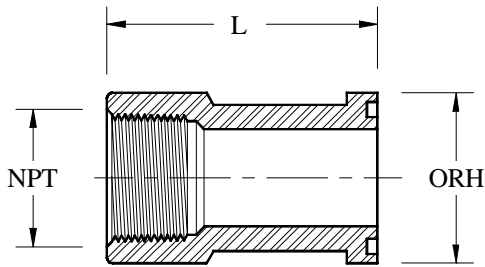
**Male NPT / Code 61 O'Ring Head**

Part No.	Male NPT	ORH	L
1750-12-12	3/4"-14	3/4"	2.69
1750-16-16	1.00"-11.5	1.00"	3.13
1750-20-20	1.25"-11.5	1.25"	3.50
1750-24-24	1.50"-11.5	1.50"	3.75
1750-32-32	2.00"-11.5	2.00"	4.00



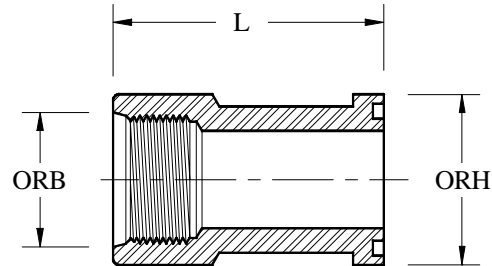
**Male ORB / Code 61 O'Ring Head**

Part No.	Male ORB	ORH	L
1593-12-12	#12 (1-1/16"-12)	3/4"	1.94
1593-12-16	#12 (1-1/16"-12)	1.00"	2.31
1593-16-16	#16 (1-5/16"-12)	1.00"	2.31
1593-20-16	#20 (1-5/8"-12)	1.00"	2.31
1593-16-20	#16 (1-5/16"-12)	1.25"	2.63
1593-20-20	#20 (1-5/8"-12)	1.25"	2.63
1593-24-20	#24 (1-7/8"-12)	1.25"	2.63
1593-20-24	#20 (1-5/8"-12)	1.50"	2.93
1593-24-24	#24 (1-7/8"-12)	1.50"	2.93
1593-32-24	#32 (2-1/2"-12)	1.50"	2.93
1593-24-32	#24 (1-7/8"-12)	2.00"	2.93
1593-32-32	#32 (2-1/2"-12)	2.00"	2.93



**Female NPT / Code 61 O'Ring Head**

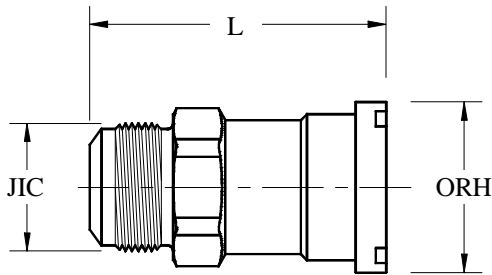
Part No.	Female NPT	ORH	L
1813-12-12	3/4"-14	3/4"	2.50
1813-12-16	3/4"-14	1.00"	1.50
1813-16-16	1.00"-11.5	1.00"	2.63
1813-16-20	1.00"-11.5	1.25"	2.88
1813-20-20	1.25"-11.5	1.25"	2.88
1813-20-24	1.25"-11.5	1.50"	3.00
1813-24-24	1.50"-11.5	1.50"	3.00
1813-24-32	1.50"-11.5	2.00"	3.13
1813-32-32	2.00"-11.5	2.00"	3.13
1813-32-40	2.00"-11.5	2.50"	3.50
1813-40-40	2.50"-8	2.50"	3.50
1813-48-48	3.00"-8	3.00"	3.75
1813-56-56	3.50"-8	3.50"	4.13
1813-64-64	4.00"-8	4.00"	4.25



**Female ORB / Code 61 O'Ring Head**

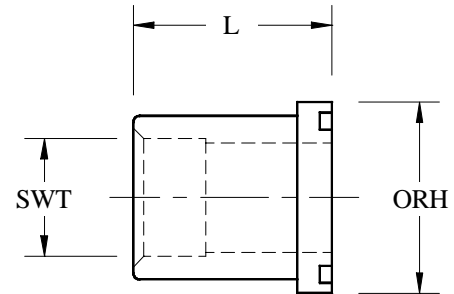
Part No.	Female ORB	ORH	L
1845-12-12	#12 (1-1/16"-12)	3/4"	2.13
1845-12-16	#12 (1-1/16"-12)	1.00"	2.63
1845-16-16	#16 (1-5/16"-12)	1.00"	2.63
1845-16-20	#16 (1-5/16"-12)	1.25"	2.88
1845-20-20	#20 (1-5/8"-12)	1.25"	2.88
1845-20-24	#20 (1-5/8"-12)	1.50"	3.00
1845-24-24	#24 (1-7/8"-12)	1.50"	3.00
1845-24-32	#24 (1-7/8"-12)	2.00"	3.13
1845-32-32	#32 (2-1/2"-12)	2.00"	3.13

## Code 61 O'Ring Head Adapters



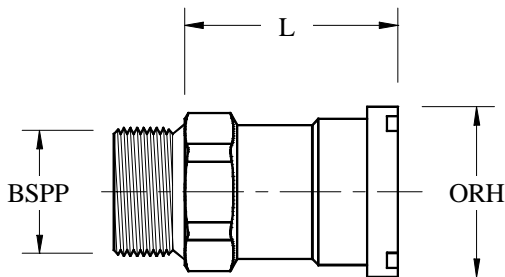
**Male JIC / Code 61 O'Ring Head**

Part No.	Male JIC	ORH	L
1841-12-12	#12 (1-1/16"-12)	3/4"	2.81
1841-12-16	#12 (1-1/16"-12)	1.00"	2.81
1841-16-16	#16 (1-5/16"-12)	1.00"	3.13
1841-20-16	#20 (1-5/8"-12)	1.00"	3.25
1841-16-20	#16 (1-5/16"-12)	1.25"	2.81
1841-20-20	#20 (1-5/8"-12)	1.25"	3.44
1841-24-20	#24 (1-7/8"-12)	1.25"	3.75
1841-20-24	#20 (1-5/8"-12)	1.50"	3.25
1841-24-24	#24 (1-7/8"-12)	1.50"	3.81
1841-32-24	#32 (2-1/2"-12)	1.50"	4.25
1841-24-32	#24 (1-7/8"-12)	2.00"	3.31
1841-32-32	#32 (2-1/2"-12)	2.00"	4.25



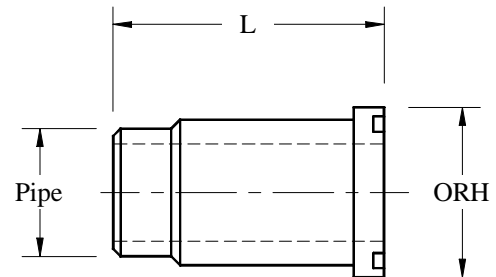
**Socket Weld Tube / Code 61 O'Ring Head**

Part No.	SWT	ORH	L
1330-12-12	3/4" (0.755)	3/4"	1.63
1330-16-12	1.00" (1.005)	3/4"	2.19
1330-16-16	1.00" (1.005)	1.00"	1.63
1330-20-16	1.25" (1.255)	1.00"	2.19
1330-20-20	1.25" (1.255)	1.25"	1.88
1330-24-20	1.50" (1.510)	1.25"	2.50
1330-24-24	1.50" (1.510)	1.50"	2.00
1330-28-24	1.75" (1.760)	1.50"	2.50
1330-32-24	2.00" (2.010)	1.50"	2.63
1330-32-32	2.00" (2.010)	2.00"	2.00



**Male BSPP / Code 61 O'Ring Head**

Part No.	Male BSPP	ORH	L
1965-12-16	3/4"-14	1.00"	2.81
1965-16-16	1.00"-11	1.00"	2.81
1965-20-16	1.25"-11	1.00"	3.13
1965-16-20	1.00"-11	1.25"	3.25
1965-20-20	1.25"-11	1.25"	2.81
1965-24-20	1.50"-11	1.25"	3.44
1965-20-24	1.25"-11	1.50"	3.75
1965-24-24	1.50"-11	1.50"	3.25
1965-24-32	1.50"-11	2.00"	3.81



**Pipe Stub / Code 61 O'Ring Head**

Part No.	Pipe	ORH	L
1827-12-12	3/4" (1.050)	3/4"	2.25
1827-16-16	1.00" (1.315)	1.00"	2.25
1827-20-20	1.25" (1.660)	1.25"	2.25
1827-24-24	150" (1.900)	1.50"	2.88
1827-32-32	2.00" (2.375)	2.00"	3.00